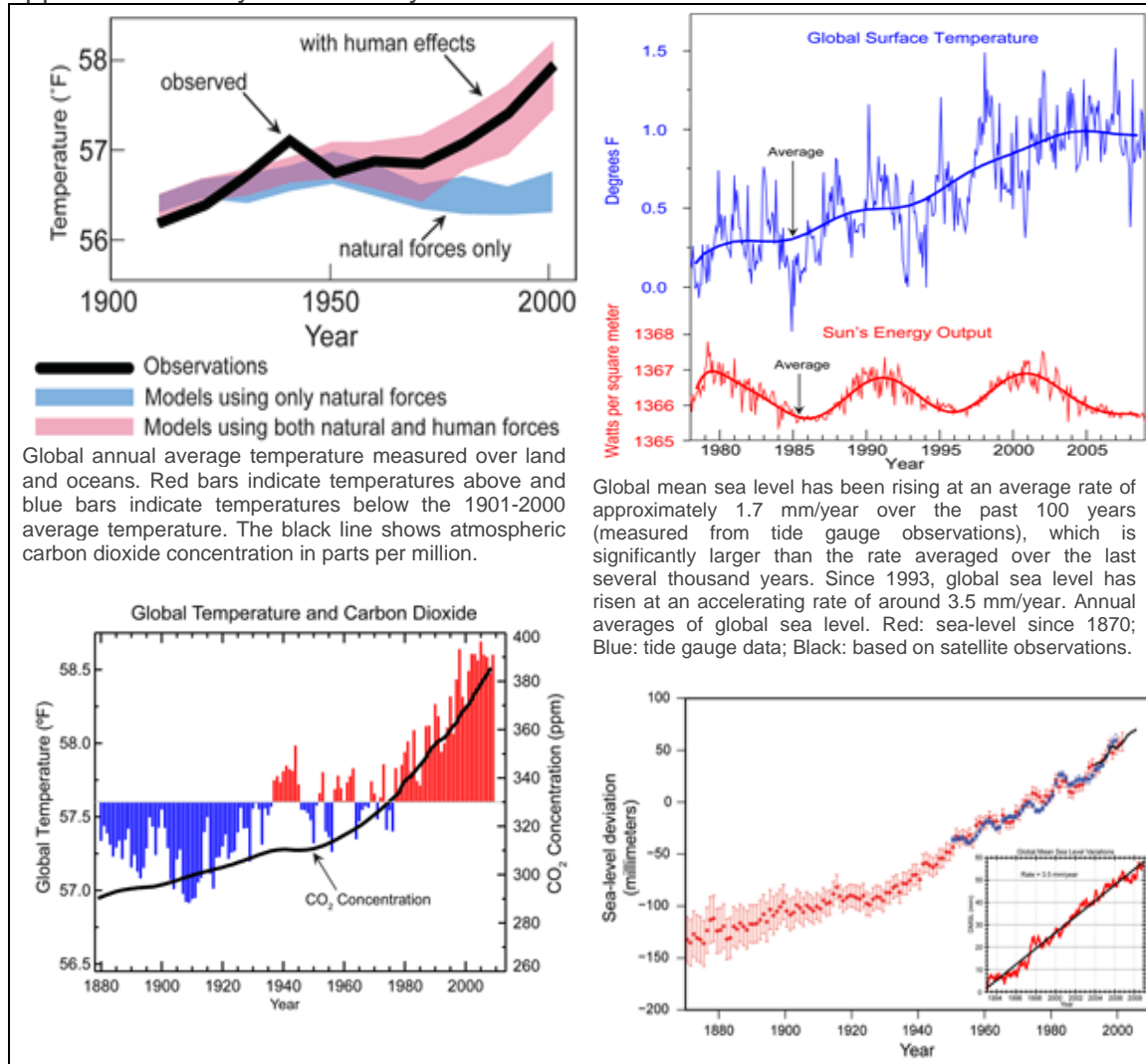


CHAPTER 33 ENVIRONMENT AND FORESTS

“What's the use of a fine house if you haven't got a tolerable planet to put it on?”
– Henry David Thoreau, *Familiar Letters*

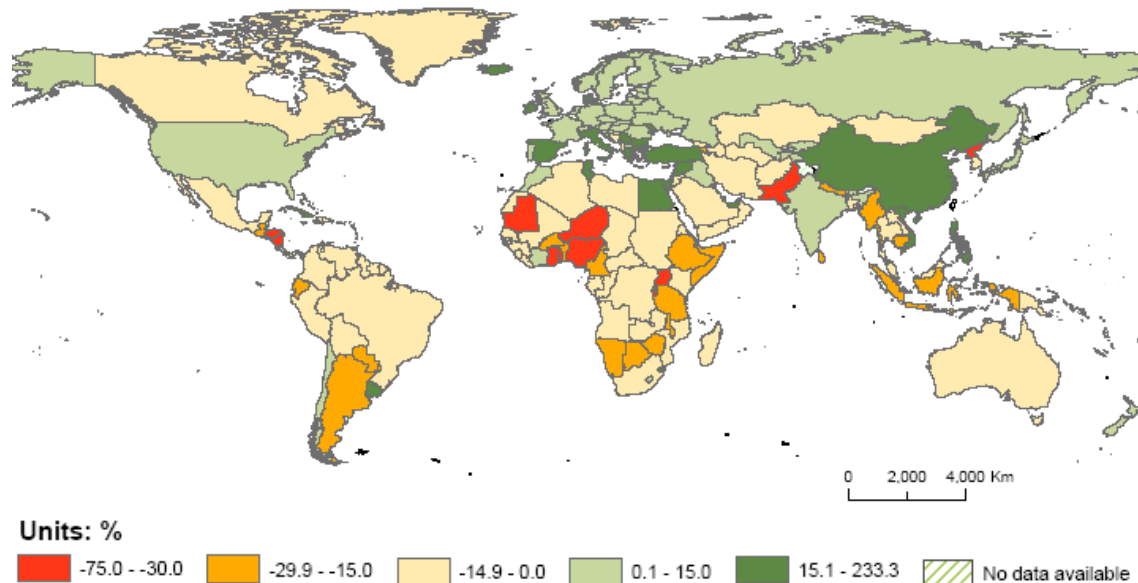
33.1 Existence of human beings not only involves interaction with the environment around them but also impacts the same significantly due to their potential to alter it. Burgeoning population in pursuit of its never ending needs, has already made its imprints reducing forest covers, emitting green house & poisonous gases, releasing toxic chemicals. Quality of present life has been adversely impacted while that of future generations is in peril. No doubt, issue of climate change with its ensuing effects has shot into centre stage as human beings are faced with the inconvenient truth about their success story.

33.2 Global climate models clearly show the effect of human-induced changes on global temperatures with global average temperature showing an increase of 1.4F approx since early 20th Century..



Source National Climate Data Center, USA

Change of Forest Area from 1990 to 2010



Data Source FAO

Map source : UNGIWG

“Over the century, atmospheric concentrations of carbon dioxide increased from a pre-industrial value of 278 parts per million to 379 parts per million in 2005, and the average global temperature rose by 0.740C. Projections indicate that global warming will continue and accelerate. With climate change, the type, frequency, and intensity of extreme events, floods, and droughts are expected to increase. Hence addressing climate change is a major challenge in terms of policies and resources needed to address it at domestic and international levels”

----- Fourth Assessment Report of the Intergovernmental Panel on Climate Change (IPCC 2007)

33.3 As the threats of global warming and consequent flooding of coastal & low lying areas loomed large, global community became increasingly engaged with environmental concerns. It became an issue not only of ensuring quality of life in future but of the very sustenance itself. Talks of growth gave way to those of sustainable growth including the dimensions of environmental sustainability in acknowledgement of the age old saying that “ **we do not inherit this planet from our ancestors, we borrow it from our children**”. Global community engaged itself in building new frameworks incorporating environmental concerns, greening its GDP, negotiating competing demands of growth & environment protection. Issues like **trading carbon credits** sprang up (e.g. an African country being paid to maintain its forest cover, (foregoing its economic benefits by exploiting it) by some industrialized country which buys the rights to engage in eco unfriendly practise up to a certain amount). Global concerns at times didn't gel with national interests as countries like China argued for per capita norms arguing further that most advanced countries had already exploited the resources ruthlessly to reach their present positions and could not argue against pro growth practices of fast developing countries which face immense energy and other requirements. (Most of the countries, particularly the industrialized countries, having large current emissions are also the largest historic emitters and the principal contributors to climate change. A relatively small number of such countries are responsible for the largest chunk of the stock of global GHG

emissions. The industrialized countries with the largest total emissions also rank among those with the highest per capita emissions)

33.4 Key Steps in furtherance of Environmental Concerns : 33.4.1 Some of the most well-known multinational agreements that have impressed upon the various pressing environmental concerns include the **Kyoto Protocol**, setting binding obligations on industrialized countries to reduce emissions of Green House Gases (GHGs) **Vienna Convention on the Protection of the Ozone Layer(1985)** ratified by 196 states & EU with a Chlorofluoro Carbons(CFCs) phase out plan under **Montreal Protocol** and **Rio Declaration on Environment and Development** .

33.4.2 The Rio Declaration on Environment and Development, often shortened to Rio Declaration, was a short document produced at the 1992 **United Nations "Conference on Environment and Development" (UNCED)**, informally known as the **Rio Earth Summit**. The Rio Declaration consisted of 27 principles intended to guide future sustainable development around the worlds. The 1992 UN Conference on the Environment and Development resulted in **United Nations Framework Convention on Climate Change** ("FCCC" or "UNFCCC") to cooperatively consider what could be done to limit average global temperature increases and the resulting climate change, and to cope with whatever impacts which were, by then, inevitable.

33.4.3 By 1995, countries realized that emission reductions provisions in the Convention were inadequate. They launched negotiations to strengthen the global response to climate change, and, two years later, adopted the **Kyoto Protocol**. The Kyoto Protocol was adopted in Kyoto, Japan, on 11 December 1997. Due to a complex ratification process, it entered into force on 16 February 2005. Kyoto Protocol is what "operationalizes" the Convention. It commits industrialized countries to stabilize greenhouse gas emissions based on the principles of the Convention. The Convention itself only encourages countries to do so.

33.4.4 The Kyoto Protocol legally binds developed countries to emission reduction targets. The Protocol's first commitment period started in 2008 and ended in 2012. The second commitment period began on 1 January 2013 and will end in 2020.

33.4.5 There are now 195 Parties to the Convention and 192 Parties to the Kyoto Protocol. The last meeting of the conference of Parties to UNFCCC took place in November 2013 in Warsaw, Poland. Earlier, milestones were achieved in various conferences including "**Bali Road Map**" Dec 2007, **The Cancun Agreements**, Dec 2010 to reduce greenhouse gas emissions, **Durban Climate Change Conference** 2011 and that in Doha , Qatar during 2012.

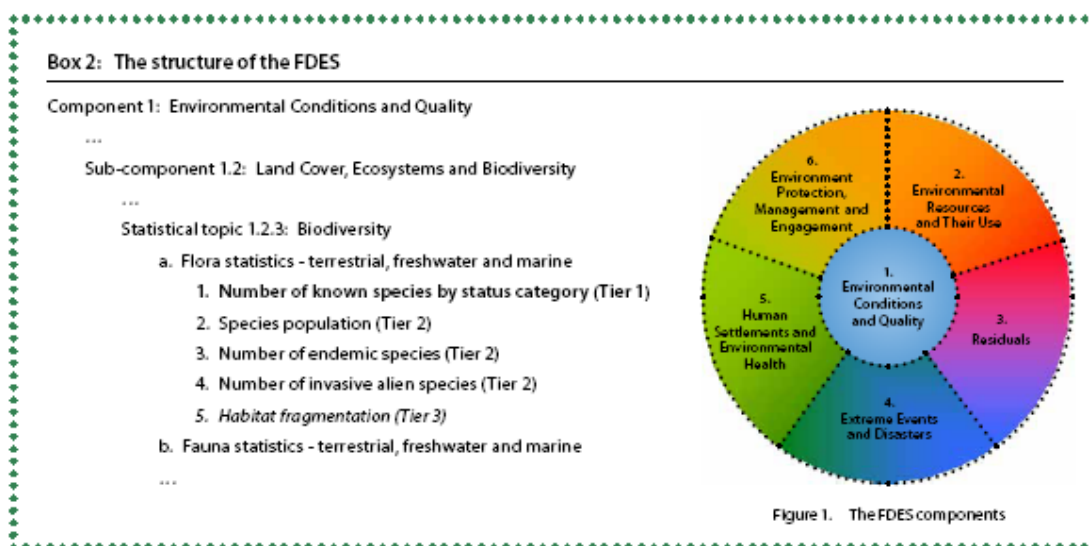
33.4.6 The **United Nations Conference on Sustainable Development (UNCSD)**, also known as **Rio 2012**, **Rio+20**, or **Earth Summit 2012** was the third international conference on sustainable development aimed at reconciling the economic and environmental goals of the global community . Nations agreed to explore alternatives to GDP as a measure of wealth that take environmental and social factors into account in an effort to assess and pay for 'environmental services' provided by nature, such as carbon sequestration and habitat protection.

33.5 Environment Frameworks (Statistical & Analytical):

33.5.1 Framework for the Development of Environment Statistics (FDES) :

33.5.1.1 United Nations Statistics Division (UNSD) developed and published in 1984 'A Framework for the Development of Environment Statistics (FDES).' The FDES sets out the scope of environment statistics by relating the components of the environment to information categories that are based on the recognition that environmental problems are the result of human activities and natural events reflecting a sequence of action, impact, and reaction. Relevant information, therefore, refers to social and economic activities and natural events, their effects on the environment, and the responses to these effects by the society. The contents of the FDES are "statistical topics"; they are those aspects of environmental concerns that can be subjected to statistical description and analysis. It a flexible framework that is used for developing and organizing environmental and related socio-economic information .

33.5.1.2 The FDES organizes environment statistics in a simple and flexible manner into components, subcomponents, statistical topics and individual statistics, using a multilevel approach.



33.5.1.3 The FDES is structured in a way that allows links to economic and social domains. It is compatible with and supports other state of the art frameworks and systems, both statistical and analytical, such as the **System of Environmental Economic Accounting (SEEA)**, the **Driving force—Pressure—State—Impact—Response (DPSIR) framework**, or the **MDGs indicator framework**.

33.5.2 The System of Environmental-Economic Accounting (SEEA) contains the internationally agreed standard concepts, definitions, classifications, accounting rules and tables for producing internationally comparable statistics on the environment and its relationship with the economy. The SEEA framework follows a similar accounting structure as the System of National Accounts (SNA) and uses concepts, definitions and classifications consistent with the SNA in order to facilitate the integration of environmental and economic statistics. The SEEA is a system for organizing statistical data for the derivation of coherent indicators and descriptive statistics to monitor the interactions between the economy and the environment and

the state of the environment to better inform decision-making. The revised SEEA consists of three parts: the **Central Framework**, which was adopted by the UN Statistical Commission as the first international standard for environmental-economic accounting; **Experimental Ecosystem Accounting** and **Applications and Extensions** of the SEEA. Subsystems of the SEEA framework elaborate on specific resources or sectors, including: Energy, Water, Fisheries, Land and Ecosystems, and Agriculture. These 'sub-systems' are fully consistent with the over-arching SEEA, but provide further details on specific topics and try to build bridges between the accounting community and the community of experts in each specific subject area.

33.5.3 Ensuring Environmental Sustainability is one of the eight goals identified under **Millennium Development Goals** and the progress on the targets and indicators relating to same has been indicated in the chapter on Millennium Development Goals.

33.6 Legislations, Institutional Support & Recent Initiatives – Indian Context :

33.6.1 Ministry of Environment & Forests is the nodal agency dealing with diverse issues of environment & forests. The Policy and Law Division of the Ministry of Environment & Forests is partly implementing the Schemes “Assistance for Abatement of Pollution, Environment Policy and Law” and “Establishment of Environment Commissions and Tribunals “ and providing legislative and Institutional support to other thematic divisions whenever needed for any amendment to **Environment (Protection) Act, 1986** or implementation of the **National Environment Policy 2006**, **National Green Tribunal Act (NGT), 2010**, Ecomark Scheme and work relating to setting up of **National Environment Assessment and Monitoring Authority (NEAMA)**. Forest Policy Division of Ministry of Environment & Forests (MoEF), on the other hand, coordinates the **National Forest Policy, 1988** and its implementation issues, **Indian Forest Act, 1927** and Policy and legislative issues of other Central Ministries/ Departments related to Forests and Scheduled Tribes & coordinating the State Forest Policies, State Forest Acts/Amendment etc. Forest Policy Division coordinates with Ministry of Panchayati Raj, Ministry of Tribal Affairs and Planning Commission on the matters related to various Acts and Policies.

33.6.2 Host of other legislations govern/regulate various issues pertaining to environment & forest protection .

- **Biological Diversity Act 2002:** Taking cognizance of the International Convention on Biodiversity (CBD), and to address the excessive pressure on biodiversity, the Government of India has enacted **Biological Diversity Act, 2002 (BDA 2002)**. Accordingly, the national, state and local level mechanisms have been provided for implementation of the Act. At the national level, **National Biodiversity Authority (NBA)** has been established by Government of India in October, 2003 at Chennai (Tamil Nadu) under Section (8) of the Biological Diversity Act. The **State Biodiversity Boards (SBB)** have been established by the State Governments and **Biodiversity Management Committees (BMC)** have also been formed.
- As a major national initiative to protect coastal ecosystems- critical reservoirs of our biodiversity, the **Coastal Regulation Zone Notification** has been published in the gazette of India on 6 January, **2011**. The government of India

and world Bank have signed a loan agreement for the implementation of an integrated coastal Zone Management Project, which will be implemented at a total cost of ₹1156 crore

- In order to ensure that there is no further degradation of wetlands, the Ministry of Environment and Forests, Government of India has notified the **Wetlands (Conservation and Management) Rules 2010**. The rules specify activities which are harmful to wetlands such as industrialization, construction, dumping of untreated waste and reclamation and prohibit these activities in the wetlands. Other activities such as harvesting and dredging may be carried out in the wetlands but only with prior permission from the concerned authorities.
- **Environment Impact Assessment (EIA) Notification, 2006 & its amendment 2009** : The Ministry of Environment and Forests (MoEF) has used Environmental Impact Assessment Notification 2006 as a major tool to regulate rapid industrial development of the country for minimizing the adverse impact on environment and reversing the trends which may lead to climate change in long run. The developmental projects have been re-categorised into category 'A' and category 'B' depending on their threshold capacity and likely pollution potential in the reengineered Environmental Impact Assessment (EIA) Notification of September 2006, requiring prior Environmental Clearance (EC) from MoEF or the concerned State Environmental Impact Assessment Authorities (SEIAAs). However EIA amendment 2009 exempts the biomass based power plants up to 15 MW, power plants based on non hazardous municipal solid waste and power plants based on waste heat recovery boilers without using auxiliary fuel from the EC process.
- The Ministry of Environment and Forests (MoEF), under the Environment (Protection) Act 1986, has notified the "**Rules for the Manufacture, Use, Import, Export and Storage of Hazardous Microorganisms / Genetically Engineered Organisms or Cells 1989**" (known as **Rules, 1989**) with a view ensure sound application of biotechnology making it possible to accrue benefits arising from modern biotechnology while minimizing the risks to environment and human health.
- Various rules have been framed for management of hazardous wastes like **E- Waste (Management & Handling) Rules, 2011, Plastic Waste (Management & Handling) Rules, 2011** etc whereas notifications of draft of some others were issued during 2011-12 like **Draft Bio Medical Waste (Management & Handling) Rules, 2011** and **Draft Hazardous Substance (Classification, Packaging & Labelling) Rules , 2011**.
- **Charter on Corporate Responsibility for Environmental Protection (CREP) (2002-03)**: Much of the environmental concerns emerge out of the process of economic growth. Hence it was felt that engagement of the main drivers of economic growth would facilitate the issue of environment protection to a large extent. CREP is a commitment for protection of environment for partnership and participatory action of the stakeholders i.e industry their associations & regulatory agencies. The charter has set targets concerning conservation of water, energy, recovery of chemicals, reduction in

pollution, elimination of toxic pollutants, process & management of residues that are required to be disposed off in an environmentally sound manner.

33.6.3 Several entities have been set up to monitor diverse issues relating to environment, forests & wild life protection:

- **National Green Tribunal** has been established for effective & expeditious disposal of cases related to environmental protection and conservation of forests & other natural resources including enforcement of legal rights relating to environment & for giving relief & compensation in related matters. As per the provisions of the **NGT Act 2010**, the National Environment Appellate Authority (NEAA), established under the NEAA Act, 1997 stands dissolved and the cases pending before NEAA stand transferred to the NGT
- **Conservation of Water Bodies (Rivers & Wetlands) :** The **National River Conservation Directorate (NRCD)**, functioning under the Ministry of Environment and Forests is engaged in implementing the River and Lake Action Plans under the **National River Conservation Plan (NRCP)** and **National Lake Conservation Plan (NLCP)** by providing financial assistance to the State Governments. **National Ganga River Basin Authority (NGRBA)** constituted in 2009 decided that under Mission Clean Ganga it will be ensured that by 2020 no untreated municipal sewage and industrial effluent flow into Ganga. World Bank assistance for abatement of pollution of river Ganga at an estimated cost of Rs 7000 Cr has been approved for implementation along with Japan International Cooperation Agency (JICA) assisted development study (**Ganga Action Plan** project at Varanasi) approval for funding by Japan Bank for International Cooperation (JBIC) for 11.184 billion Yen. Financial assistance of 13.33 billion Yen has also been received from JICA for implementing **Yamuna Action Plan (YAP)** Phase II.
- **National Wetland Conservation Programme (NWCP)** was initiated in 1987 to lay down policy guidelines for conservation and management of wetlands in the country, provide financial assistance for undertaking intensive conservation measures in the identified wetlands, monitor implementation of the Programme and to prepare an inventory of Indian wetlands. Central Government notified the **Wetlands (Conservation and Management) Rules – 2010** and as per the provision under Rule 5 of these wetlands rules, **Central Wetlands Regulatory Authority (CWRA)** has been constituted.
- Two tier system at National and State level are in operation for effective coordination to implement the scheme on **Mangroves and Coral Reefs**. This includes the **National Committee on Mangroves & Coral reefs** at centre & State Level Steering Committees. For encouraging targeted research on both hard and soft corals in the country, a **National Coral Reef Research Centre** at Port Blair has been established. The four major coral reefs areas identified for intensive conservation and management are (1) Gulf of Mannar, (2) Gulf of Kutch, (3) Lakshadweep, and (4) Andaman and Nicobar Islands.
- **Wild Life Conservation:** Government of India provides technical and financial support to the State/ UT Governments for wildlife conservation under the various Centrally Sponsored Schemes – **Integrated Development of Wildlife Habitats, Project Tiger, and Project Elephant**, and also through

Central Sector Scheme - **Strengthening of Wildlife Division** and Consultancies for Special Tasks, and through Grants in Aid to the **Central Zoo Authority** and **Wildlife Institute of India**, Dehradun. The **National Board for Wildlife (NBWL)** has been constituted as per the provisions of the **Wild Life (Protection) Act, 1972**, in 2003. **National Tiger Conservation Authority (NTCA)** ensures wildlife management, protection measures and site specific eco-development to reduce the dependency of local communities on tiger reserve resources. The centrally sponsored scheme "Project Tiger" was launched in 1973 . NTCA provides details on the tiger conservation, tiger population in the natural environment, tiger taskforce, tiger reserves in India legal and statutory provisions, crime against tigers etc. National Wildlife Action Plan (2002-2016) emphasizes the need for peoples' participation and support for wildlife conservation. Wildlife Wing in the Ministry of Environment and Forest is apex body for wildlife conservation. Zoos in India are regulated as per the provisions of the Wild Life (Protection) Act,1972 and are guided by the **National Zoo Policy, 1998**. The **Central Zoo Authority** was established by the Government of India in the year 1992 through an amendment in the Wild Life (Protection) (1991 amendment) Act, 1972. The main objective was to enforce minimum standards and norms for upkeep and health care of animals in India zoos and restrain mushrooming of unplanned and ill conceived zoos. **Recognition of Zoo Rules, 1992** was revised and notified on 11.11.2009.

- For effectively control illegal trade in wildlife, a multidisciplinary Tiger and Other Endangered Species Crime Control Bureau (**Wildlife Crime Control Bureau**) has been constituted with effect from 6.6.2007.
- **National Afforestation & Eco Development Board (NAEB)** : In order to promote afforestation, tree planting, ecological restoration and eco development activities in the country, the National Afforestation and Eco-Development Board (NAEB) was set up in August 1992. Special attention is also given by NAEB to the regeneration of degraded forest areas and lands adjoining forest areas, national parks, sanctuaries and other protected areas as well as the ecologically fragile areas like the Western Himalayas, Aravallis, Western Ghats etc. National Afforestation and Eco- Development Board (NAEB) operates the following three major schemes:
 - (a) **National Afforestation Programme (NAP) Scheme**
 - (b) **NAEB Scheme**: The major components of the Scheme are:
 - i. Grants in Aid for Greening India (GIA for GI) Scheme
 - ii. Monitoring and Evaluation (M&E)
 - iii. Communication
 - iv. Support to Regional Centres (RCs)
 - (c) **Eco Development Forces (EDF) Scheme**
- **Indian Network of Climate Change Assessment (INCCA)** was launched in 2009 to Assess the drivers and implications of climate change through scientific research; (b) Prepare climate change assessments once every two years (greenhouse gas estimations and impact of climate change, associated vulnerabilities and adaptation); (c) Develop decision support systems and (d) Build capacity towards management of climate-change related risks and opportunities.
- **Central Pollution Control Board (CPCB)**: It performs functions as laid down under the **Water (Prevention & Control of Pollution) Act , 1974**, and the

Air (Prevention & Control of Pollution) Act, 1981. It is responsible for planning & executing comprehensive nationwide programmes for the prevention and control of water and air pollution, for advisory activities to Central Government & for coordinating with & for providing technical assistance & guidance to State Pollution Control Boards/ Committees.

- **Botanical Survey of India (BSI)** : Established in 1890, BSI is the apex research organization under MoEF for carrying out taxonomic & floristic studies on wild plant resources of the country. Besides survey of flora. BSI documents indigenous knowledge of plant resources, carries out ex-situ conservation in botanic gardens & monitors implementation of “Assistance to Botanic Gardens Scheme” of MoEF.
- **Zoological Survey of India (ZSI)** : The Zoological Survey of India (ZSI), a premier institution under the Ministry, has been undertaking survey, exploration and research leading to the advancement of our knowledge on the exceptionally rich faunal diversity of the country since its inception in 1916. With its headquarters at Kolkata and 16 Regional Centers located at different parts of the country, ZSI in recent years reoriented its plan of work by grouping the survey and studies under the following six major programmes :
 - Fauna of States
 - Fauna of Conservation Areas
 - Fauna of Important Ecosystems
 - Status Survey of Endangered Species
 - Ecological Studies/Environment Impact Assessment Survey, and
 - Computerization and Dissemination of Data
- **Forest Survey of India** : Forest Survey of India (FSI), established in 1981 , is an organization under MoEF, Government of India , engaged in the assessment of the country's forest resources on a regular interval. Some main activities of Forest Survey of India include – **Forests & Tree Cover Assessment** and **Inventory of forests and Trees Outside Forests (TOF)**. FSI is also preparing for the first time an Atlas of forest types of India.
- **National Spatial Data Infrastructure** :This is an initiative undertaken by **Department of Science & Technology(DST), Government of India**. NSDI aimed at encouraging collection, aggregation and distribution of spatial data on different themes on a common defined set of standards and formats by different mapping agencies in India. FSI is the nodal agency for forestry sector for the DST endeavour aimed at creating a portal from which users may directly access and buy all kinds of spatial data generated by Indian mapping agencies.

33.6.4 Various **Schemes** like **Intensification of Forest Management Scheme (IFMS)** (centrally sponsored scheme providing financial assistance on cost share basis – NE States & special category states namely J&K, Himanchal Pradesh & UK share 10% of the cost while rest share 25 % of the cost of the annual Plans of operations of forest protection) and scheme for **“Assistance for Abatement of Pollution”** (Centrally Sponsored Scheme being implemented by the Ministry of Environment and Forests since Seventh Five Year Plan (1990-1995) with an allocation of Rs 45 crore in the XI Five Year Plan (including Policy & law and Environmental Health Cell scheme)) focussing on diverse issues related to

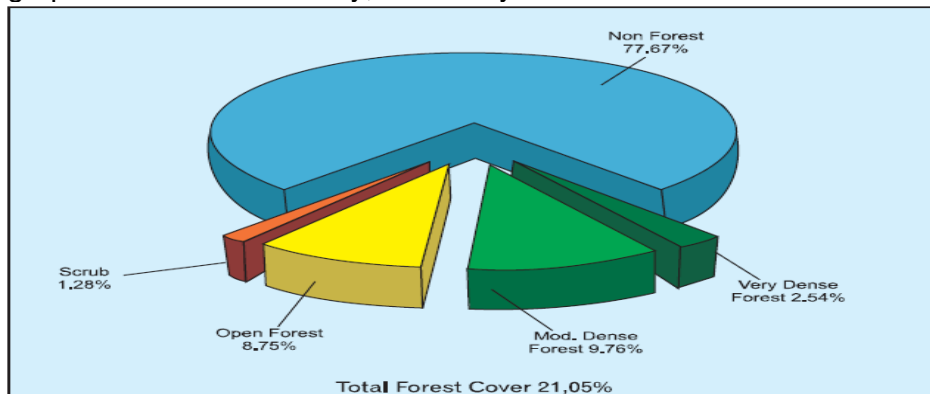
environment & forests are being implemented .Whereas those like **National Natural Resource Management System (NRRMS)** (an umbrella scheme of Planning Commission) intend to involve utilization of remote sensing technology for accurate inventory of resources such as land, water, forests, minerals, oceans etc and to utilize this information for monitoring changes in ecological system. Scheme on **National Forestry Database Management System (NFDMS)** aims to prepare a blue print towards the development of National Forestry Database Management System to monitor the programmes and to develop Forest Statistics Database and to ensure/ advocate networking with the State / UTs Forest Department. The database system will collect, compile and disseminate information on the production and consumption pattern of forestry products including Timber, Non Wood Forest Products, Forest Trade and data related to Export, Import of Forestry Products. Scheme aims for development of National Forest Management System integrated with information systems of the States to ensure effective monitoring with a universal access of all stakeholders. Forest Survey of India is its nodal agency.

33.7 Data Source : 33.7.1 Statistics related to different domains of environment & forests are collected, compiled and disseminated by various entities of **Ministry of Environment & Forests** monitoring different subjects like **Ozone Cell** (information on Ozone Depleting substances production use & trade etc), **Central Pollution Control Board** (information on air & water quality, noise pollution etc), **Forest Survey of India** (forest, tree and mangrove cover including socio economic contribution of forests, published in **Indian State of Forest Reports**), **Indian Council of Forestry Research & Education (ICFRE)** (information on wasteland, forest produce, revenue from & expenditure on forests etc), **National Afforestation & Eco Development Board, NAEB** (information on afforestation) etc . Besides these **Annual Report** of MOEF & its publications like **State of Environment Report** provide some consolidated information.

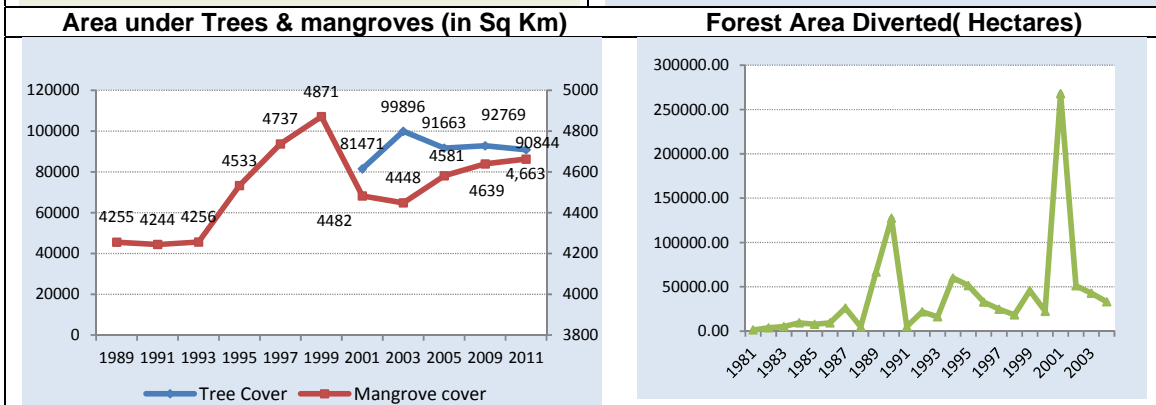
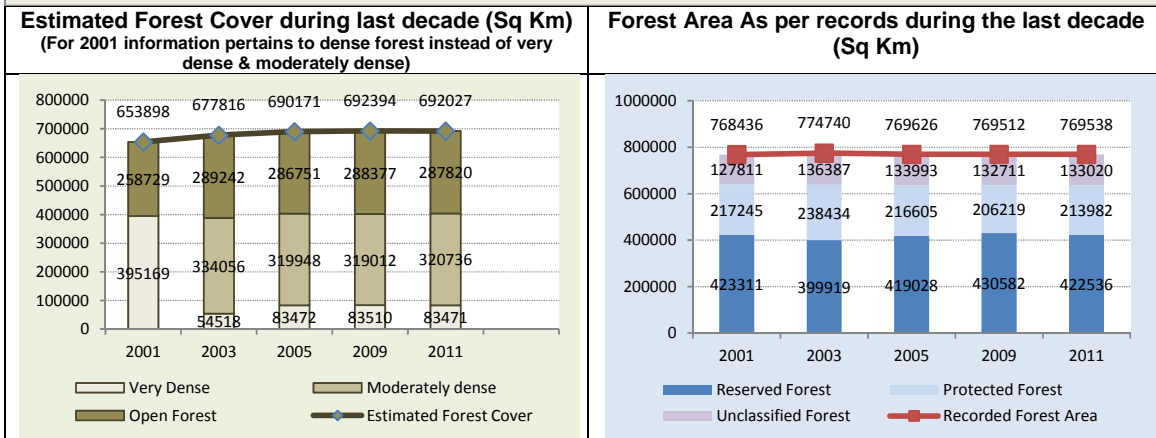
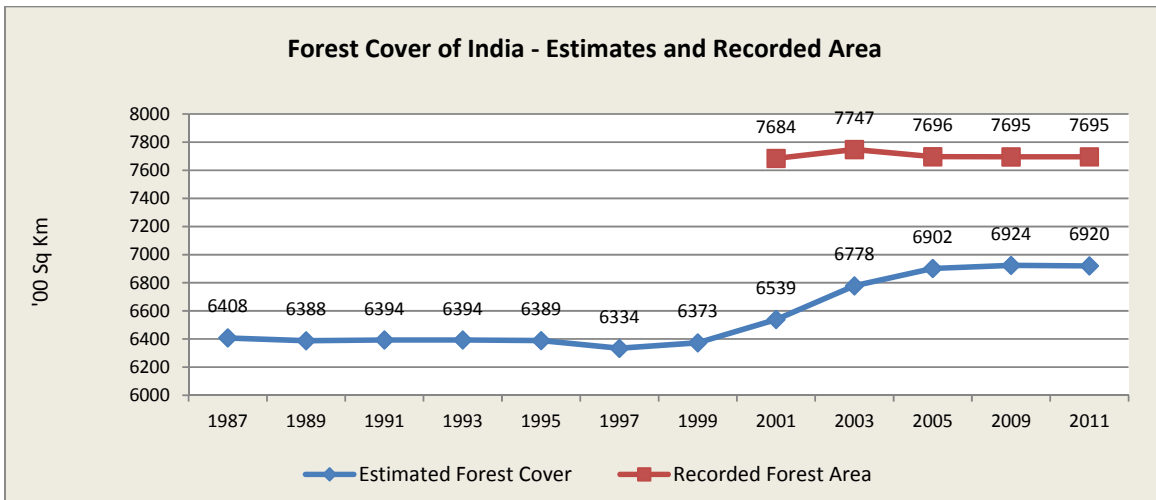
33.7.2 **Central Statistics Office, Ministry of Statistics & PI** also brings out **Compendium of Environment Statistics India** which contains information on biodiversity, human settlements and impacts on atmosphere, land & soil and water .

33.8 Trends & Key statistics :

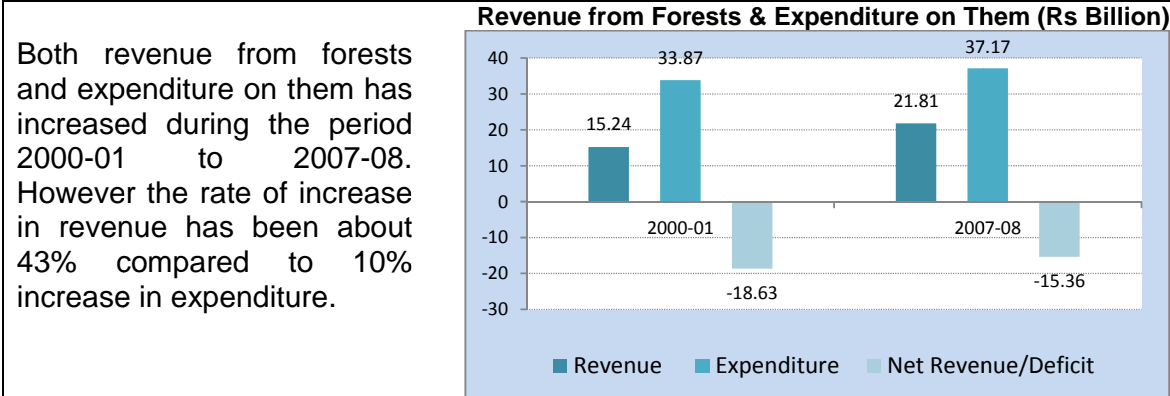
33.8.1 **Forests , Mangroves & Tree Cover:** 33.8.1.1 India's forest cover in 2011 was 21.05% of the geographical area. 2.54% was very dense forest, 9.76% moderately dense forest, and the rest 8.75% was open forest; including 0.47 million hectare mangroves. The North-East region of the country, accounts for about 8% of the geographic area of the country, but nearly one fourth of its forest cover .



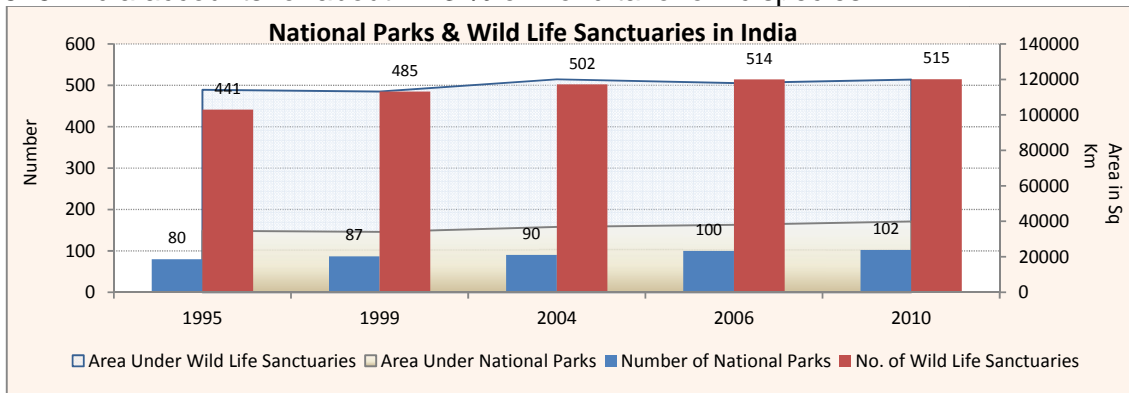
33.8.1.2 Mangroves comprise salt-tolerant, evergreen, broad leaved trees having aerial roots like pneuma tophores or stilt roots and viviparous germinated seedlings found mainly in tropical and subtropical inter-tidal regions of the world. Mangroves in India cover 4,663 Sq Km accounting for about 3 % of the World's mangrove vegetation. Area under mangroves recorded a net increase of 23 Sq km over the previous assessment figures. Very dense mangrove comprise 30.10 % of the mangrove cover, moderately dense about 35.57 % and open mangrove about 34.33 % of mangrove cover. West Bengal has nearly half of the country's mangroves. India's tree cover (comprising sub hectare tree patches outside forest cover) has been estimated as 90,844 Sq Km constituting 2.76% of geographical area of the country



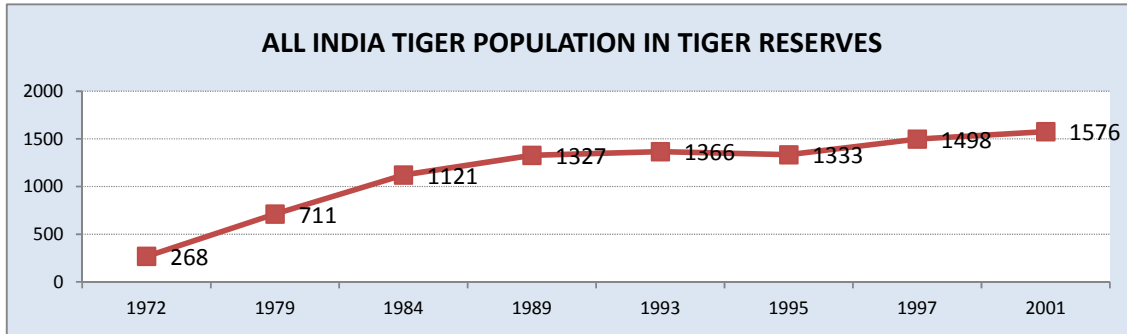
33.8.1.3 Government of has been making efforts to maintain forest cover through afforestation , on the other hand forest areas have been diverted to other uses at an alarming rate since the implementation of Forest Conservation Act 1980as indicated above.



33.8.2 Wildlife Conservation : 33.8.2.1 National Parks & Sanctuaries There has been about seven per cent increase in protected area (National Parks & Wild Life Sanctuaries) since 1995 as the total area under these increased from 148849 Sq Km in 1995 to 159818 Sq Km in 2010. The number of national parks during the period increased from 80 to 102 whereas that of wildlife sanctuaries increased from 441 to 515. India accounts for about 7.43 % of world taxonomic species.

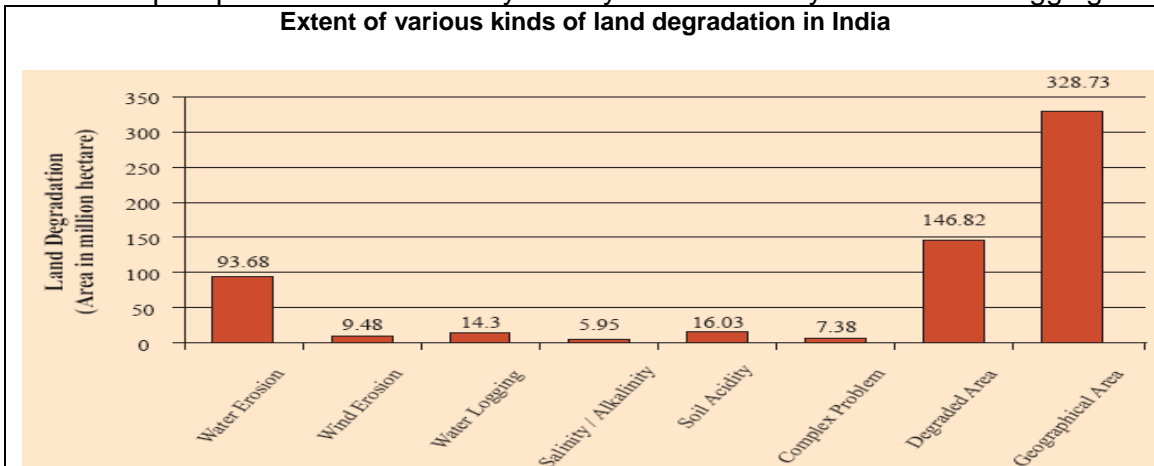


33.8.2.2 Various centrally sponsored schemes like **Project Tiger** (launched in 1973) and **Project Elephant** (launched in 1992) were launched to protect these animals through their habitat management by declaration of tiger and elephant reserves. The tiger population, in the reserves has shown some improvement over the years. As per refined methodology being used since 2006, about 20 % increase in the estimated number of Tigers was recorded in 2010 with the population of 1706 (1520-1909) . During 2006 , the estimated number of tigers was 1411(1165-1657).



33.8.2.3 Elephant population in the reserves has also shown an increase from 2005 to 2007 as it increased from more than 21,200 to about 27694 (27669- 27719) elephants during 2007 .

33.8.3 Human Impact: 33.8.3.1 In India, an estimated 146.82 Million hectare area suffers from various forms of land degradation due to water and wind erosion and other complex problems like alkalinity/salinity and soil acidity due to water logging



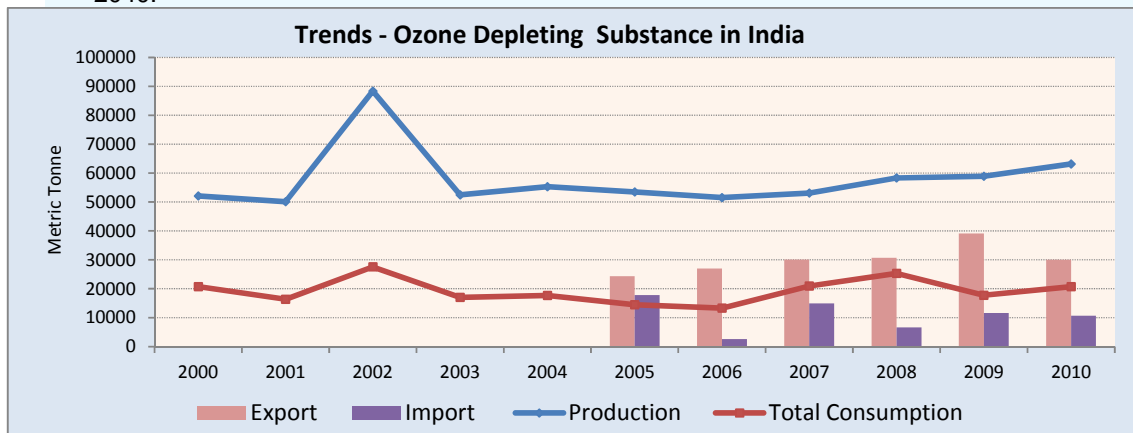
33.8.3.2 Besides degradation in the land quality, significant adverse impact has been noticed in air and water quality as well . Some trends in emission of **Green House Gases(GHGs)**, production & consumption of **Ozone Depleting Substances(ODS)** & release of various gases on account of vehicular and other emissions are summarized below:

33.8.3.3 **Greenhouse Gases (GHG):** Global GHG emissions have risen sharply since 1945. As per a working paper published by the World Resources Institute, total GHGs were estimated at 44,153 MtCO₂ equivalents (million metric tons) in 2005. This is the most recent year for which comprehensive emissions data are available for every major gas and sector. Total global emissions grew by 12.7 per cent between 2000 and 2005, an annual average of 2.4 per cent. CO₂ is the predominant gas accounting for 77 per cent of world GHG emissions in 2005 followed by methane (15 per cent) and nitrous oxide (7 per cent). North America accounted for 18 per cent of world GHG emissions, China for 16 per cent, and the EU for 12 per cent in 2005. India's share stood at 4 per cent in 2005. India's Greenhouse Emissions are much lower compared to those of the developed countries, even if the historical emissions are excluded. Its high level of emissions is due to large populace, geographical size and large economy. The most recent data available for India are the assessment

carried out by the Indian Network for Climate change assessment (INCCA) in May 2010. The key results of the assessment are that the total net GHG emissions from India in 2007 were 1727.71 millions of CO₂ equivalent (eq.) of which carbon dioxide emissions were 1221.76 million tons, methane 20.56 million tons and nitrous oxide 0.24 million tons.

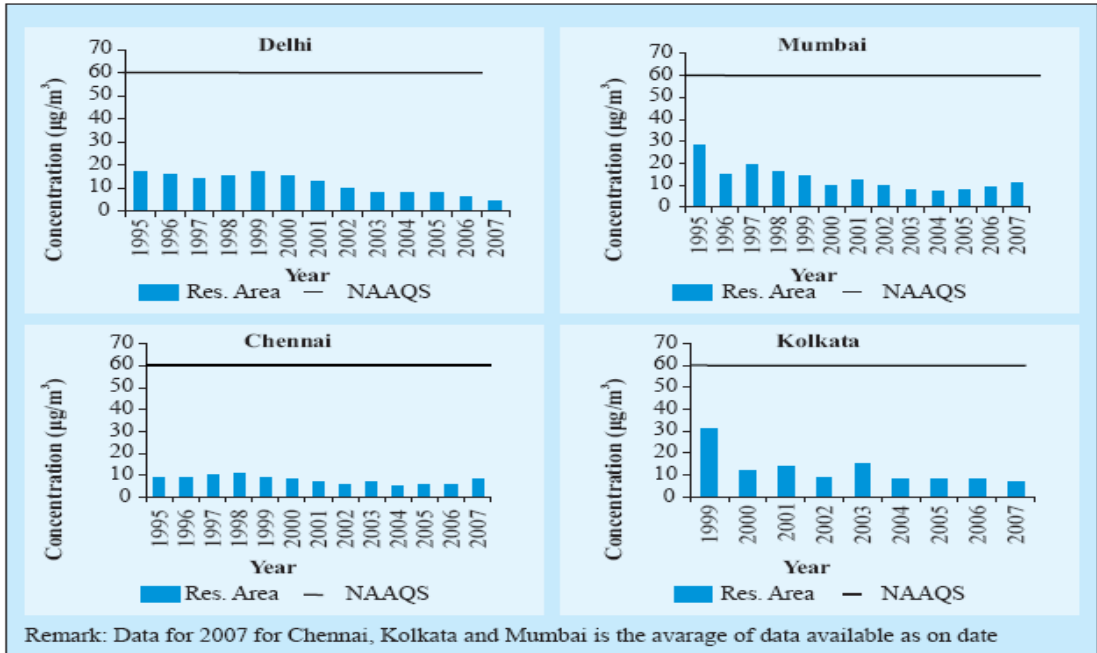
33.8.3.4 Ozone Depleting Substances(ODS) : Ozone Depleting Substances (Regulation & Control) Rules, 2000 regulate production, consumption & trade of ODS in India . India had earlier signed the Montreal Protocol in 1992 and a country program to phase out ODS was prepared in accordance with national industrial development policy. Ozone Cell in M/o Environment & Forests has been given operational and administrative responsibility for India's overall ODS phase out program. The new phase out Plan as per the 19th Meeting of Parties (MOP) is :

- Base-level for production & consumption:the average of 2009 and 2010
- Freeze= 2013 at the base-level
- 10% reduction in 2015
- 35% reduction in 2020
- 67.5% reduction in 2025
- 100% reduction in 2030 with a service tail of 2.5% annual average during the period 2030-2040.



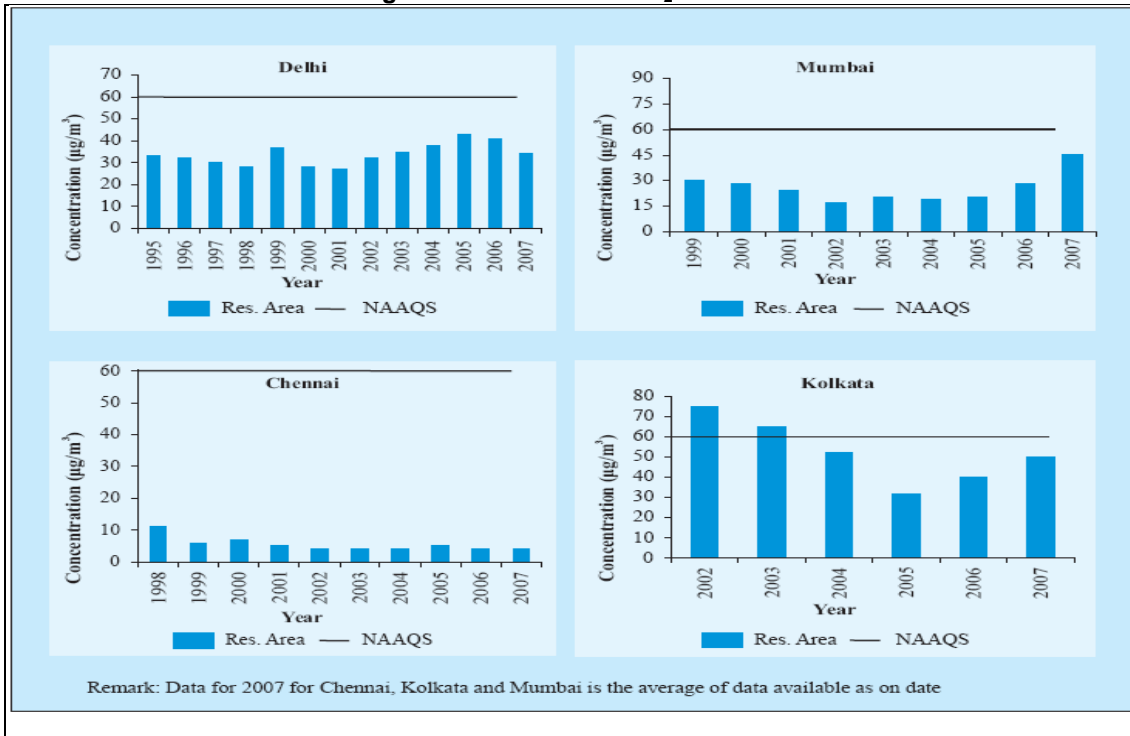
Source Ozone Cell, MoEF

33.8.3.5 Air Quality : 33.8.3.5.1 **National Ambient Air Quality Standards (NAAQS)** have been notified by Central Pollution Control Board(CPCB) to monitor air quality in view of increasing industrialization, vehicular use etc. A decreasing trend has been observed in SO₂ levels in many cities like Delhi and Mumbai, during the last few years. This trend may be due to various measures taken, such as reduction of sulphur in diesel etc. and use of LPG instead of coal as a domestic fuel. Trends in Annual Average Concentration of SO₂ in Residential Areas of four metro cities of India is given below. During 2008, the levels in the four metro cities of Delhi, Mumbai, Chennai and Kolkata were 6.6, 8.7, 9.5 & 7.7µg/m³ respectively.

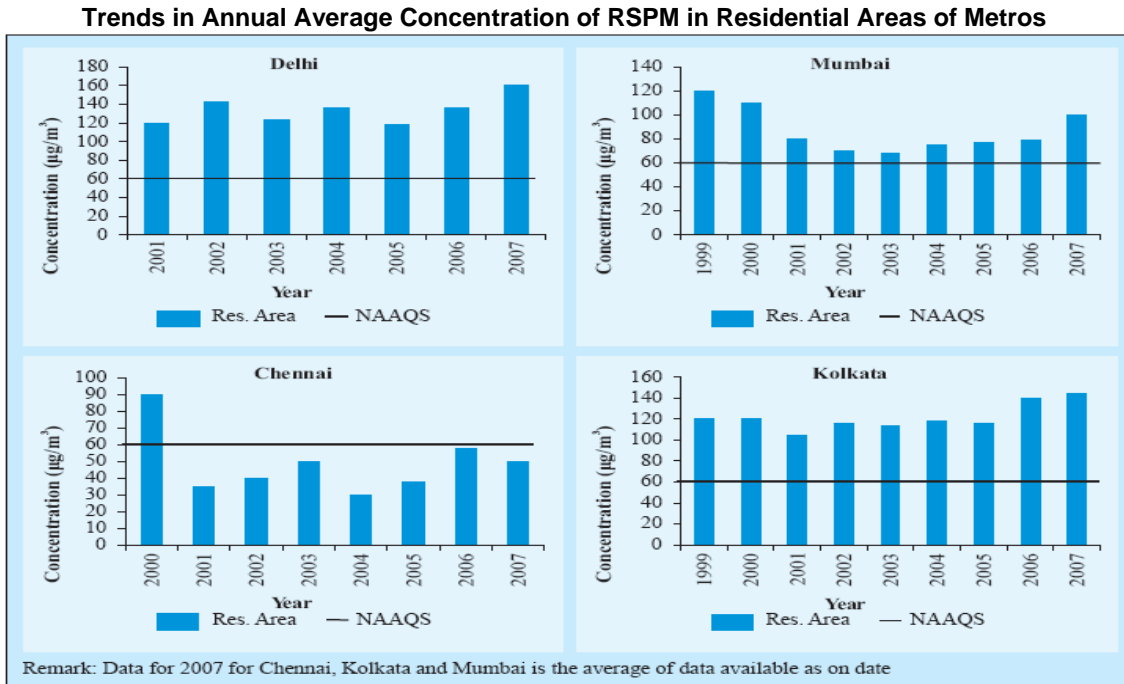


33.8.3.5.2 During the last few years, a decreasing trend has been observed in nitrogen dioxide levels due to various measures taken for vehicular pollution control such as stricter vehicular emission norms. Vehicles are one of the major sources of NO₂ in the country. However, Delhi observed an increasing trend in the past few years, especially after the introduction of CNG. This alternative fuel is known to emit, comparatively, more NO₂ than diesel and petrol. During 2008, the levels in the four metro cities of Delhi, Mumbai, Chennai and Kolkata were 56.7, 39.3, 15.4 & 64 µg/m³ respectively. Trends in Annual Average Concentration of NO₂ in Residential Areas of four metro cities of India is given below

Trends in Annual Average Concentration of NO₂ in Residential Areas of Metros



33.8.3.5.3 Annual average concentrations of Respirable Suspended Particulate Matter (RSPM) and Suspended Particulate Matter (SPM) exceeded the NAAQS in most of the cities. During 2008 , the levels in the four metro cities of Delhi, Mumbai, Chennai and Kolkata were 214, 127, 63 & 103 $\mu\text{g}/\text{m}^3$ respectively



References :

- State of Environment Report, India 2009 Ministry of Environment & Forests
- Annual Report 2011-12 , Ministry of Environment & Forests.
- State of Forest Report 2011, Forest Survey of India, M/o Environment & Forests
- Compendium of Environment Statistics India 2012, Ministry of Statistics & PI
- Websites of UNSTATS, UNFCC, National Climate Data Centre , Govt of USA.