

## VI. AGRICULTURE

**TABLE 6.1 LAND UTILISATION STATISTICS (1)**

(lakh hectare)

Item	1990-91	1996-97(P)	1997-98(P)	1998-99(P)
Reporting area (2) for land utilisation statistics	3049	3049	3049	3060
Forests	678	688	689	690
Not available for cultivation	405	415	416	424
Other uncultivated land excluding fallow land	302	286	284	287
Current fallow	137	133	144	135
Fallow lands other than current fallows	97	99	98	99
Area sown (net)	1430	1428	1420	1426
Area sown more than once	427	468	487	500
<b>Total cropped area</b>	<b>1857</b>	<b>1896</b>	<b>1908</b>	<b>1926</b>

Source: Directorate of Economics & Statistics, Ministry of Agriculture

(1) Relates to agriculture year : July to June.

(2) Excludes data in respect of Jammu and Kashmir under unlawful occupation of China & Pakistan.

Note: Totals may not tally due to rounding off of the figures.

## VI. AGRICULTURE

**TABLE 6.2 ESTIMATED NUMBER OF OPERATIONAL HOLDINGS AND  
AREA OPERATED BY SIZE OF HOLDINGS: 1990-91**

Size class (hectare)	Number		Area operated	
	Lakh	%age	Lakh hectare	%age
Marginal (Below 1)	634	59.4	249	15.0
Small (1 - 2)	201	18.8	288	17.4
Semi-Medium (2 - 4)	139	13.1	384	23.2
Medium (4 - 10)	76	7.1	448	27.1
Large (10 and above)	16	1.6	286	17.3
<b>Total</b>	1066	100.0	1655	100.0

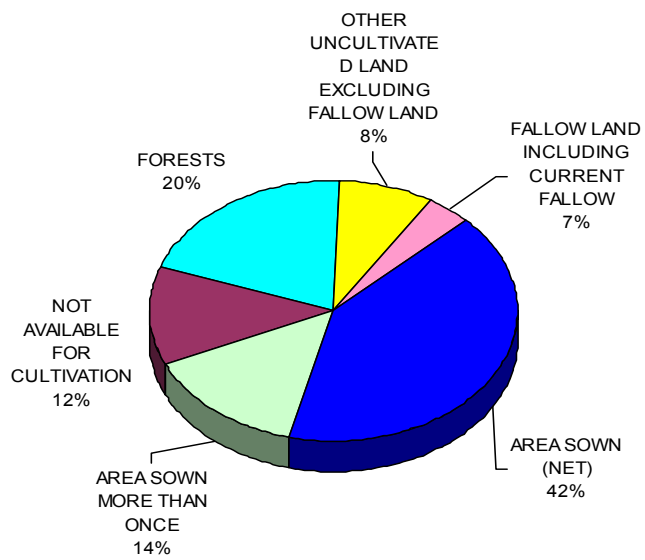
Source: Ministry of Agriculture

Note: Percentages are on the basis of absolute values.

# LAND UTILISATION

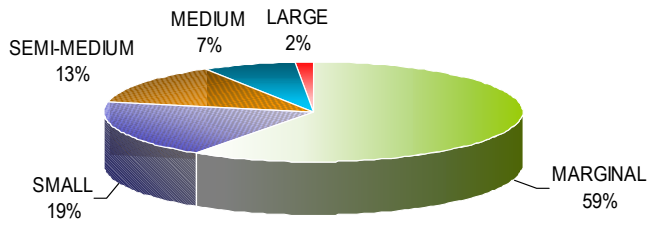
LAKH HECTARE

**1998-99**

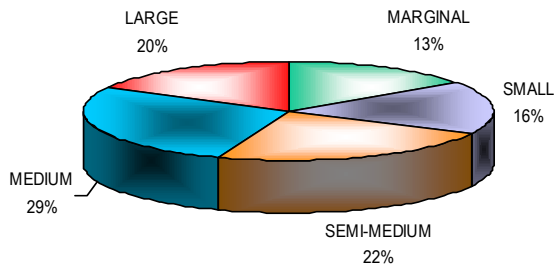


# OPERATIONAL HOLDINGS AND AREA OPERATED 1990-91

Number Lakh



## Area Operated Lakh Hectare



60  
VI. AGRICULTURE

**TABLE 6.4 PRODUCTION OF PRINCIPAL CROPS**

('000 tonne)

Crop	1990-91	1999-00	2000-01	2001-02
<b>Foodgrains</b>	176390	208875	209802	218520
Cereals	162125	195525	183819	197790
Rice	74291	89683	84871	91610
Jowar	11681	8685	7716	8390
Bajra	6894	5782	7059	8100
Maize	8962	11510	12068	13510
Ragi	2340	2290	2742	2660
Small millets	1190	618	600	590
Wheat	55135	76369	68763	71470
Barley	1632	1447		1470
<b>Pulses</b>	14265	13418	10665	13520
Gram	5356	5118	3522	5320
Tur	2417	2694	2262	2370
Other pulses	6492	5606	4881	5830
<b>Non-foodgrains</b>				
Oilseeds (1)	18609	24282	23250	20730
Groundnut (shell)	7515	5258	6223	7360
Sesamum	835	480	587	670
Rapeseed & mustard	5229	5788	4207	4650
Linseed	332	241	194	220
Castorseed	716	765	867	720
Coconut (2)	973	12129	12597	12597

For footnotes, please see next page.

## VI. AGRICULTURE

**TABLE 6.4 PRODUCTION OF PRINCIPAL CROPS-concl.d.**

('000 tonne)

Crop	1990-91	1999-00	2000-01	2001-02
<b>Non-foodgrains-Concl.d.</b>				
<b>Fibres</b>				
Cotton(lint) (3)	9842	11530	9652	11690
Jute (4)	7917	9428	9170	9640
Mesta (4)	1311	1113	1122	1150
<b>Plantation crops</b>				
Tea	720	826	846(E)	854(E)
Coffee	170	292	301	301
Rubber	330	622	630	631
<b>Fruits and vegetables</b>				
Potato	15206	24713	22143	22143
Banana	7153	11123	11771	11771
<b>Condiments and spices</b>				
Pepper (black)	48	59	50	50
Chillies (dry)	719	1053	908	908
Ginger (dry)	154	263	263	263
Turmeric	342	654	654	654
<b>Miscellaneous</b>				
Sugarcane	241046	299324	299212	292210
Tobacco	556	524	488	488

Source: Directorate of Economics & Statistics, Ministry of Agriculture

(1) Relates to nine major oil seeds including nigerseed, safflower, sunflower and soyabean.

(2) In crore nuts.

(3) In '000 bales of 170 kgs each.

(4) In '000 bales of 180 kgs each.

(5) Figures supplied by the Tea Board and are as on 31st Dec.of the year.

(6) Figures supplied by the Coffee Board.

(7) Figures supplied by the Rubber Board and relate to natural rubber (dry) from tapped area.

Note: Totals may not tally due to rounding off of the figures.

P- Provisional

E- Estimated

## VI. AGRICULTURE

**TABLE 6.5 AVERAGE YIELD OF PRINCIPAL CROPS**  
(quintals per hectare)

Crop	1990-91	1999-00	2000-01	2001-02
<b>Foodgrains</b>	13.8	17.0	16.5	17.4
<b>Cereals</b>	15.7	19.3	18.7	19.8
Rice	17.4	19.9	19.6	20.9
Jowar	8.1	8.5	7.6	7.9
Bajra	6.6	6.5	6.9	8.8
Maize	15.2	17.9	18.2	20.2
Ragi	10.8	14.0	15.5	14.8
Small millets	4.9	4.4	4.1	4.6
Wheat	22.8	27.8	27.1	27.7
Barley	17.0	20.0	18.4	21.3
<b>Pulses</b>	5.8	6.4	5.4	6.1
Gram	7.1	8.3	7.4	8.7
Tur	6.7	7.9	6.2	6.8
Other pulses	4.8	5.0	4.2	4.5
<b>Non-foodgrains</b>				
Oilseeds (1)	7.7	8.5	8.1	9.0
Groundnut	9.0	7.7	9.8	10.7
Sesamum	3.3	3.1	3.0	4.2
Rapeseed and mustard	9.0	9.6	9.4	10.0
Linseed	3.0	4.1	3.5	4.0
Castorseed	8.8	9.8	8.2	9.0
Coconut (nuts/hect.)	6595	6892	6922	..

For footnotes, please see next page.

## VI. AGRICULTURE

**TABLE 6.5 AVERAGE YIELD OF PRINCIPAL CROPS-concl. (quintals per hectare)**

Crop	1990-91	1999-00	2000-01	2001-02
<b>Non-foodgrains-Concl. Fibres</b>				
Cotton	2.2	2.3	1.9	1.9
Jute	18.3	20.1	20.3	21.7
Mesta	9.9	10.8	11.8	..
<b>Plantation crops</b>				
Tea	17.1	16.7(E)	16.7(E)	16.7(E)
Coffee	8.0	9.5	9.6	9.0
Rubber	10.8	15.8	15.8	15.8
<b>Fruits and vegetables</b>				
Potato	162.5	184.4	182.8	..
Banana	196.0	239.5	257.6	..
<b>Condiments and spices</b>				
Pepper (black)	2.8	3.0	2.4	..
Chillies (dry)	8.8	10.0	10.1	..
Ginger (dry)	28.4	..	..	..
Turmeric	28.8	47.3	41.3	..
<b>Miscellaneous</b>				
Sugarcane	653.9	709.4	685.8	681.5
Tobacco	13.5	12.1	17.0	..

Source: Directorate of Economics & Statistics, Ministry of Agriculture

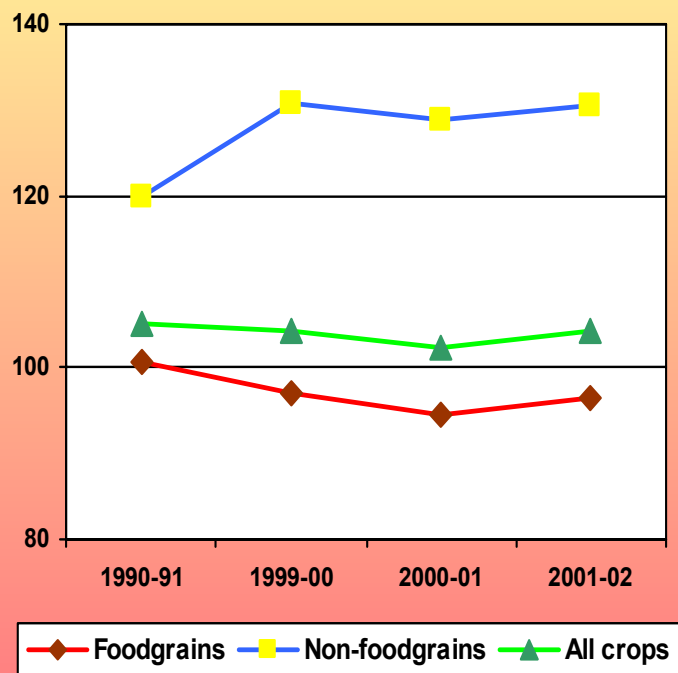
- (1) Relate to nine major oil seeds including nigerseed, safflower, sunflower and soyabean.
- (2) Figures supplied by the Tea Board. These are as on 31st December of the year and relate to total area and not plucked area.
- (3) Based on the estimated bearing area for 1980-81 onwards supplied by the Coffee Board.
- (4) Figures supplied by the Rubber Board; yield relates to production of natural rubber (dry) per hectare of tapped area.

P- Provisional

E- Estimated



## INDEX NUMBER OF AREA UNDER CROPS ( BASE : Triennium ending 1981-82=100 )



**TABLE 6.6 INDEX NUMBER OF AREA UNDER CROPS-Concl'd.**  
(Base: Triennium ending 1981-82=100)

Crop/Group	1990-91	1999-00	2000-01	2001-02
<b>Non-foodgrains-Concl'd.</b>				
<b>Fibres</b>	91.1	104.6	102.9	105.6
Cotton	92.9	108.8	107.1	109.3
Jute	89.7	97.7	95.4	101.6
Mesta	67.1	52.2	50.6	57.1
<b>Plantation crops</b>	122.5	168.9	168.9	168.9
Tea	110.3	115.3	115.3	115.3
Coffee	111.1	157.5	157.5	157.5
Rubber	158.2	285.6	285.6	285.6
<b>Fruits and vegetables</b>	111.6	142.5	140.4	140.4
Potato	128.6	184.2	166.5	166.5
Banana	129.0	164.3	155.5	155.5
<b>Condiments and spices:</b>	113.8	132.8	126.3	126.3
Pepper (black)	157.1	177.2	191.2	191.2
Chillies (dry)	98.1	115.3	109.1	109.1
Ginger (dry)	126.5	182.6	182.2	182.2
Turmeric	120.3	163.0	163.0	163.0
<b>Miscellaneous</b>				
Sugarcane	130.4	149.3	152.0	162.1
Tobacco	93.3	98.3	65.1	65.1
<b>All crops</b>	105.2	104.8	102.3	104.4

Source: Directorate of Economics & Statistics, Ministry of Agriculture

(1) Relate to nine major oil seeds including nigerseed, safflower, sunflower and and soyabean.

## VI. AGRICULTURE

**TABLE 6.7 INDEX NUMBER OF AGRICULTURAL PRODUCTION**  
(Base: Triennium ending 1981-82=100)

Crop/Group	1990-91	1999-00	2000-01	2001-02
<b>Foodgrains</b>	143.7	169.7	157.5	171.0
Cereals	144.2	175.1	165.1	176.5
Rice	149.4	180.3	170.7	184.2
Jowar	102.7	76.3	67.8	73.7
Bajra	139.6	117.1	142.9	164.0
Maize	137.6	176.7	185.3	207.4
Ragi	86.6	84.7	101.4	98.4
Small millets	76.9	40.0	38.8	38.1
Wheat	156.6	217.0	195.4	203.0
Barley	82.8	73.4	72.6	74.5
<b>Pulses</b>	140.5	132.1	105.4	133.0
Gram	130.2	124.4	85.6	129.3
Tur	121.9	135.9	114.1	119.5
Other pulses	159.1	137.4	119.6	142.8
<b>Non-foodgrains</b>	156.3	187.7	176.8	185.2
<b>Oilseeds (1)</b>	184.2	193.3	176.4	194.1
Groundnut	125.3	87.7	103.7	122.7
Sesamum	181.0	104.0	127.2	145.1
Rapeseed & mustard	256.3	283.7	206.2	227.9
Linseed	84.7	61.5	49.6	56.2
Castor seed	289.7	309.5	350.6	291.2
Coconut	172.4	214.9	223.2	223.2
<b>Fibers</b>	128.2	149.5	127.6	151.7
Cotton(lint)	130.9	153.3	128.3	155.4
Jute	122.6	145.9	141.9	149.2
Mesta	76.7	65.1	65.7	67.3

## VI. AGRICULTURE

**TABLE 6.7 INDEX NUMBER OF AGRICULTURAL PRODUCTION-concl. d.**  
(Base: Triennium ending 1981-82=100)

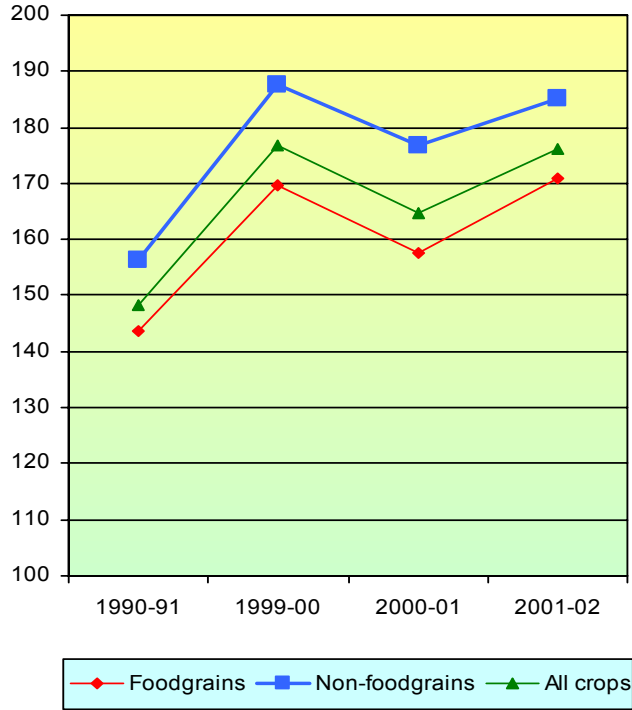
Crop/Group	1990-91	1999-00	2000-01	2001-02
<b>Non-foodgrains-Concl. d.</b>				
<b>Plantation crops</b>	144.9	188.1	185.1	188.1
Tea	132.3	143.6	143.6	143.6
Coffee	122.3	148.2	148.2	148.2
Rubber	217.2	399.3	399.3	399.3
<b>Fruits and vegetables</b>	145.1	222.8	212.2	212.2
Potato	163.3	265.4	237.8	237.8
Banana	163.6	254.4	269.2	269.2
<b>Condiments and spices</b>	143.9	191.8	199.3	192.3
Pepper (black)	166.7	204.9	174.4	174.4
Chillies(dry)	140.9	206.4	178.0	178.0
Ginger(dry)	181.5	311.1	311.2	311.2
Turmeric	159.6	304.6	304.6	304.6
<b>Miscellaneous crops</b>				
Sugarcane	154.3	191.6	191.5	187.0
Tobacco	115.8	109.1	101.7	101.7
<b>All crops</b>	148.4	176.4	164.7	176.3

Source: Directorate of Economics & Statistics, Ministry of Agriculture

(1) Relate to nine major oil seeds including nigerseed, safflower, sunflower & soyabean.

# INDEX NUMBER OF AGRICULTURAL PRODUCTION

( BASE : Triennium ending 1981-82=100 )



## VI. AGRICULTURE

**TABLE 6.8 INDEX NUMBER OF AGRICULTURAL YIELD-concl. d.**  
(Base: Triennium ending 1981-82=100)

Crop/Group	1990-91	1999-00	2000-01	2001-02
<b>Non-foodgrains-Concl. d.</b>				
<b>Fibres</b>	139.9	141.5	122.8	142.3
Cotton(lint)	140.8	140.9	119.8	142.2
Jute	136.6	149.4	148.8	146.8
Mesta	114.3	124.6	129.7	117.9
<b>Plantation crops</b>	122.2	123.4	123.4	123.4
Tea	119.9	124.6	124.6	124.6
Coffee	110.3	94.1	94.1	94.1
Rubber	137.5	139.8	139.8	139.8
<b>Fruits &amp; vegetables</b>	124.8	144.1	145.0	145.0
Potato	127.0	144.1	142.8	142.8
Banana	126.8	154.9	173.1	173.1
<b>Condiments &amp; spices</b>	124.2	148.5	142.1	142.1
Pepper (black)	106.1	115.7	91.2	91.2
Chillies (dry)	143.7	179.1	163.0	163.0
Ginger (dry)	143.4	170.8	170.8	170.8
Turmeric	132.7	186.8	186.8	186.8
<b>Miscellaneous</b>				
Sugarcane	118.3	128.3	125.9	115.3
Tobacco	124.0	111.0	156.2	156.2
<b>All crops</b>	133.8	149.1	143.7	150.9

Source: Directorate of Economics & Statistics, Ministry of Agriculture

## VI. AGRICULTURE

### TABLE 6.9 AVAILABILITY OF FOODGRAINS

(lakh tonne)

Commodity Group	1991	1999	2000	2001
<b>I. Cereals</b>				
1. Production (1)				
(i) Gross	1621	1887	1964	1852
(ii) Net	1419	1651	1718	1621
2. Net imports	-6	(-)15	-14	-45
3. Change in Govt.stocks	-44	75	139	123
4. Net availability [1(ii)+2-3]	1457	1561	1566	1452
<b>II. Pulses</b>				
Net availability	129	133	118	110

Source: Directorate of Economics & Statistics, Ministry of Agriculture

(1) Figures relate to the agricultural year: July to June.

Note: Net imports are based on imports and exports on Government of India accounts only.

### TABLE 6.10 PER CAPITA NET AVAILABILITY OF FOODGRAINS

(grams per day)

Commodity Group	1991	1999	2000	2001
Cereals	469	429	422	385
Pulses	42	37	32	29
Foodgrains	510	466	454	414

Source: Directorate of Economics & Statistics, Ministry of Agriculture

Note: Totals may not tally due to rounding off of the figures.

## VI. AGRICULTURE

**TABLE 6.11 PER CAPITA AVAILABILITY OF CERTAIN  
IMPORTANT ARTICLES OF CONSUMPTION**

Item	1990-91	1998-99	1999-2000	2000-2001(P)
Edible oils (1) (kg.)	5.5	8.5	9.1	8.0
Vanaspati (kg.)	1.0	1.3	1.3	1.4
Sugar (2) (kg.)	12.7	14.9	15.6	15.8
Cotton cloth (3) (metre)	15.1	13.1	14.2	14.2
Man-made fibre				
fabrics (3) (metre)	9.0	15.1	16.4	16.5
Tea (3) (gram)	612	684	641	638
Coffee (3) (gram)	59	65	55	58
Electricity				
(Domestic) (kwh.)	38.2	66.7	71.2	..

Source: Directorate of Economics & Statistics, Ministry of Agriculture

(1) Include groundnut oil, rapeseed & mustard oil, sesamum oil, nigerseed oil, sunflower oil, and soyabean oil but exclude oils for manufacture of vanaspati.

(2) Figures refer to actual releases for domestic consumption during sugar year (Nov.-Oct.).

(3) Data relate to calendar year. Figures for 1990 are shown against 1990-91 and so on.



## VI. AGRICULTURE

### TABLE 6.12 NET AND GROSS AREA IRRIGATED

('000 hectare)

Item	1990-91	1996-97P	1997-98P	1998-99P
<b>Net area irrigated</b>	48023	55049	54566	57053
<b>By sources-</b>				
Canals	17453	17262	17093	17741
Government	16973	16782	16618	17238
Private	480	480	475	503
Tanks	2944	3343	3100	2943
Wells (1)	24694	30818	30882	33096
Other sources	2932	3626	3491	3272
<b>Gross area irrigated</b>	63204	73246	72784	75546
<b>Cropwise distribution</b>				
<b>Foodcrops</b>	52134	59494	59945	62573
Foodgrains	44866	50823	51175	53542
Cereals and millets	42258	47870	48486	50588
Rice	19469	22191	22116	23415
Wheat	19511	22373	22922	23631
Barley	530	467	502	479
Jowar	794	771	793	796
Bajra	548	542	585	650
Maize	1162	1317	1319	1361
Other cereals and millets (2)	244	209	249	245
Pulses	2608	2953	2690	2954
Sugarcane	3398	3911	3835	3979
Condiments and spices	1100	1494	1503	1508
Fruits and vegetables	2575	2999	3153	3235
Other food crops	195	267	281	311
<b>Non-foodcrops</b>	11070	13752	13060	12971
Oilseeds	5761	7414	6788	6608
Cotton	2487	3279	3284	3315
Other non-foodcrops(3)	2822	3059	2988	3048

Source: Ministry of Agriculture

(1) Include tube wells.

(2) Include ragi.

(3) Include tobacco and fodder crops also.

Note: Totals may not tally due to rounding off of figures.

## VI. AGRICULTURE

**TABLE 6.13 CO-OPERATIVE SOCIETIES-concl'd.**  
(as on 31st March 1997)

Type of society	Loans (Rs.crore)		
	Advanced	Outstanding	Overdue
(1)	(5)	(6)	(7)
<b>I. All Credit Societies</b>	117595	96172	17699
<b>A.Short-term structure</b>	114337	84078	16248
1.State Co-op. Banks	34525	17315	1732
2.Dist. Central Co-op. Banks	37942	27396	6843
3.Industrial Co-op. Banks	369	222	44
4.Primary Agriculture Credit societies (1)	13243	15265	5353
5.Grain Banks	1	1	0
6.Primary Co-op Banks	22474	17510	1700
7.Primay Non-Ag. Societies	5782	6369	576
<b>B.Long-term structure</b>	3258	12094	1451
1.State Co-op. Agriculture & Rural Development Banks	2026	7884	918
2.Primary Co-op.Agriculture and Rural Development Banks	1232	4210	533
<b>II.All Non-credit Societies (2)</b>	3183	8109	619
1.Marketing (3)	385	2093	0
2.Agricultural Processing(4)	42	38	4
3.Suger factories (5)	114	122	34
4.Farming	4	11	7
5.Others (6)	2638	5845	574

**Source : National Banks for Agriculture and Rural Development (NABARD)**

- (1) Includes FSS and LAMPS.  
(2) Data relates to year 1994-95.  
(3) Data relating to M.P. not made available.  
(4) Includes Cotton ginning & other agricultural processing societies.  
(5) Data relating to States of Maharashtra, M.P. and TamilNadu were not received and hence not included.  
(6) Other societies include weaver societies, other industrial societies, consumer stores & all other non-credit societies.

## VI. AGRICULTURE

**TABLE 6.13 CO-OPERATIVE SOCIETIES-Contd.**  
(as on 31st March 1997)

Type of society	Number	Member- ship ( <sup>'000</sup> )	Working capital (Rs.crore)
(1)	(2)	(3)	(4)
<b>I. All Credit Societies(A+B)</b>	134333	147222	156907
<b>A.Short-term structure</b>	133573	133488	140807
1.State Co-op. Banks	28	101	28357
2.Dist. Central Co-op. Banks	365	1322	47348
3.Industrial Co-op. Banks	8	106	412
4.Primary Agriculture Credit societies (1)	93004	98610	24183
5.Grain Banks	187	31	3
6.Primary Co-op Banks	1613	16759	31203
7.Primay Non-Ag. Societies	38368	16559	9752
<b>B.Long-term structure</b>	760	13734	16100
1.State Co-op. Agriculture & Rural Development Banks	19	6231	10736
2.Primary Co-op.Agriculture and Rural Development Banks	741	7503	5364
<b>II.All non-credit societies (2)</b>	350152	61309	36057
1.Marketing (3)	10886	10711	6739
2.Agricultural Processing (4)	3270	1483	964
3.Suger factories (5)	273	2794	8332
4.Farming	7409	334	85
5.Others (6)	328314	45987	19937

For footnotes, please see next page.