



**PRESS NOTE**  
**ON**  
**PERIODIC LABOUR FORCE SURVEY (PLFS)**

**Monthly Bulletin December, 2025**

**NATIONAL STATISTICS OFFICE**  
**MINISTRY OF STATISTICS AND PROGRAMME IMPLEMENTATION**  
**GOVERNMENT OF INDIA**

**GOVERNMENT OF INDIA  
NATIONAL STATISTICS OFFICE  
MINISTRY OF STATISTICS AND PROGRAMME IMPLEMENTATION**

**पौष 26, शक संवत् 1947  
15<sup>th</sup> January, 2026**

**PRESS NOTE**

***Female LFPR and WPR recorded a yearly high in December, 2025  
Overall Unemployment Rate broadly stable***

**Snapshot:**

- Overall LFPR for persons aged 15 years and above continued its upward trend since June, 2025 and stood at 56.1% in December, 2025.
- Female LFPR, in the age group 15 years and above, recorded a sustained increase since June, 2025 and stood at 35.3% in December 2025, marking the highest level observed during the year.
- Following a decline in June, 2025, the overall WPR for persons of age 15 years and above, showed a sustained recovery and reached its yearly peak of 53.4% in December, 2025.
- In the age group 15 years and above, rural male and female workforce participation increased in December 2025, reaching 76.0% and 38.6%, respectively.
- UR for persons aged 15 years and above was at 4.8% in December, 2025, compared to 4.7% in November, 2025.
- Urban female UR witnessed decline to 9.1% in December, 2025 from its yearly highest level of 9.7% observed in October, 2025, in the age group 15 years and above.

**A. Introduction**

The Periodic Labour Force Survey (PLFS) conducted by NSO, MoSPI, is the primary source of data on activity participation and employment and unemployment conditions of the population. The PLFS survey methodology has been modified from January, 2025 to provide monthly and quarterly estimates of labour force indicators for the country.

Monthly results of PLFS are released in the form of Monthly Bulletins. It presents estimates of key labour market indicators viz. Labour Force Participation Rate (LFPR), Worker Population Ratio (WPR) and Unemployment Rate (UR) at the all-India level following the Current Weekly Status<sup>1</sup> (CWS) approach.

---

<sup>1</sup> The activity status of a person is determined on the basis of the activities pursued by the person during the specified reference period. The activity status determined on the basis of a reference period of last 7 days preceding the date of survey is known as the Current Weekly Status (CWS) of the person.

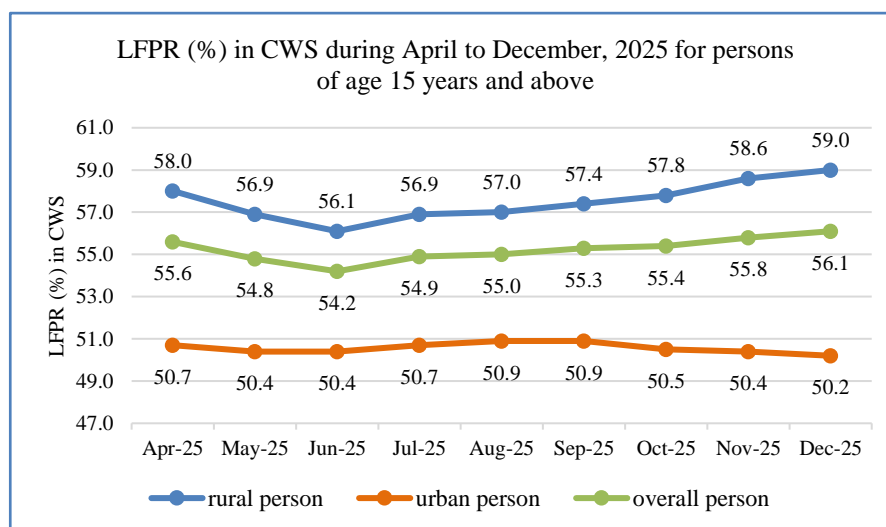
The Monthly Bulletins for April, 2025 to November, 2025 have already been released. The present Monthly Bulletin for December, 2025 is the ninth in the series.

### **Key findings for persons of age 15 years and above following CWS:**

- ***Labour Force Participation Rate (LFPR) maintains upward momentum:***

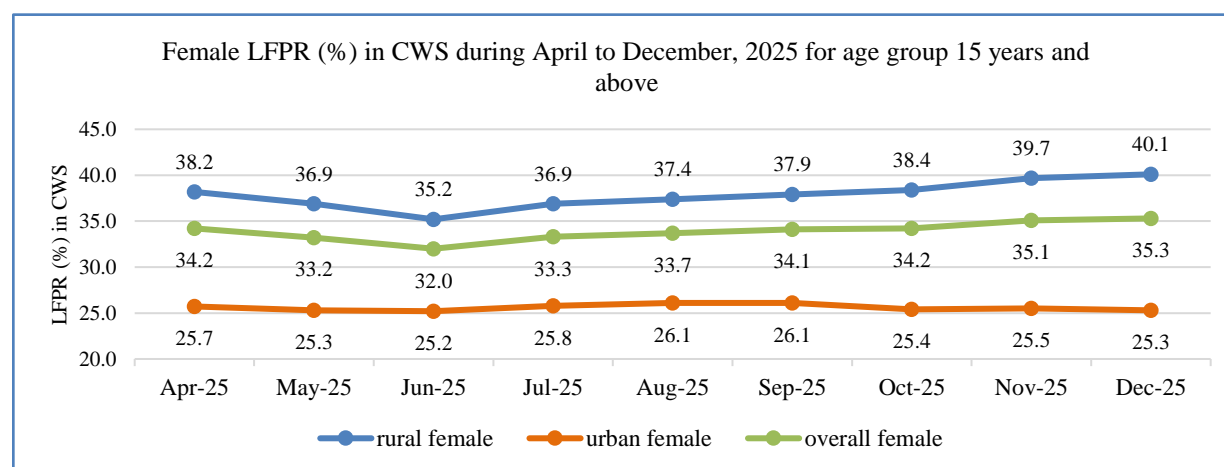
The overall LFPR among persons of age 15 years and above showed upward trend. The overall LFPR observed as 56.1% in December, 2025 compared to 55.8% in November, 2025. In rural areas, the LFPR estimated as 59.0% in December, 2025 in comparison to 58.6% in November, 2025. The urban LFPR experienced a slight dip to 50.2% from 50.4% during this period.

Overall LFPR rises to a yearly peak at 56.1% in December, 2025



- ***Female labour force participation climbed to yearly high:***

In December 2025, overall labour force participation for female of age 15 years and above edged up to 35.3% from 35.1% in November, 2025. In rural areas, it witnessed an increase to 40.1% during December, 2025 from 39.7% in the previous month and in urban areas, it slipped slightly to 25.3% in December, 2025 from 25.5% in November, 2025.

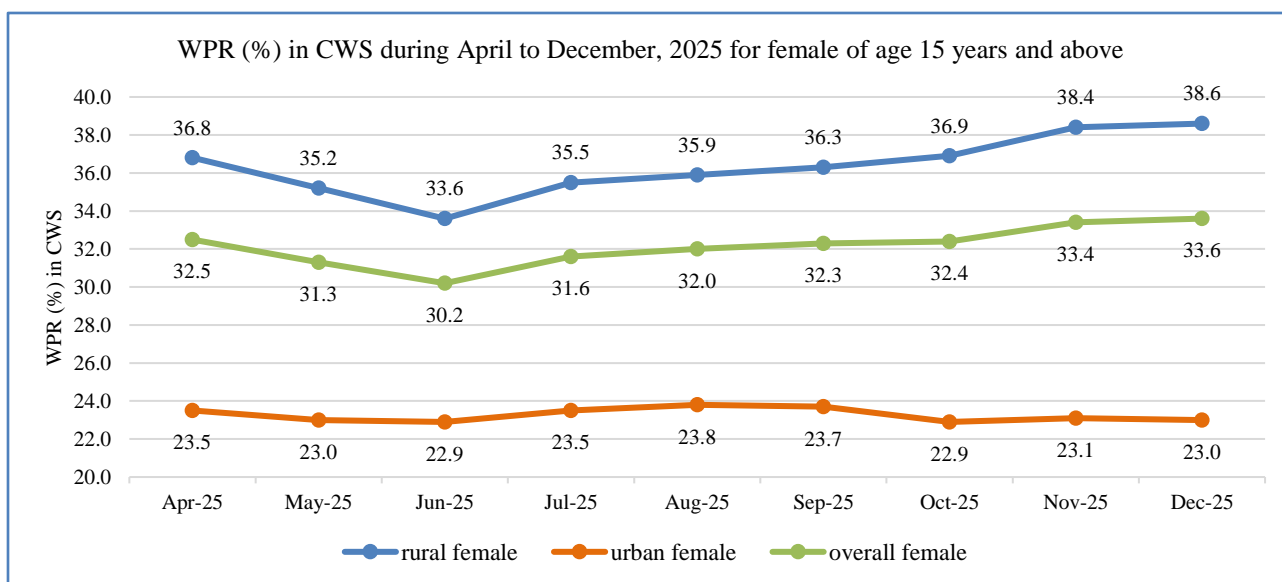
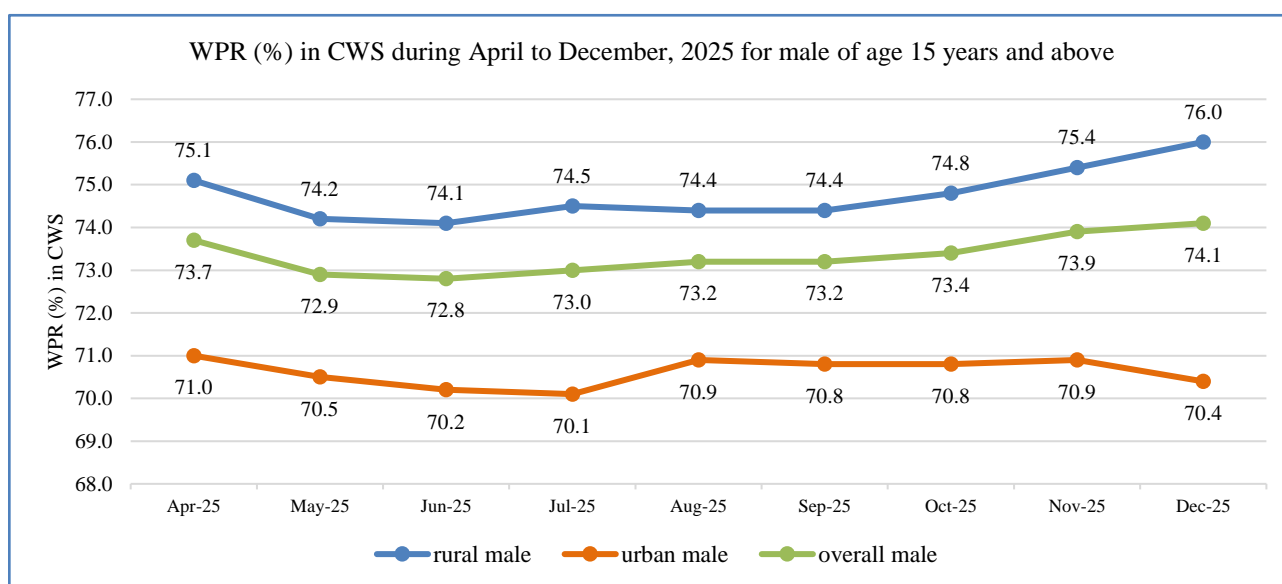


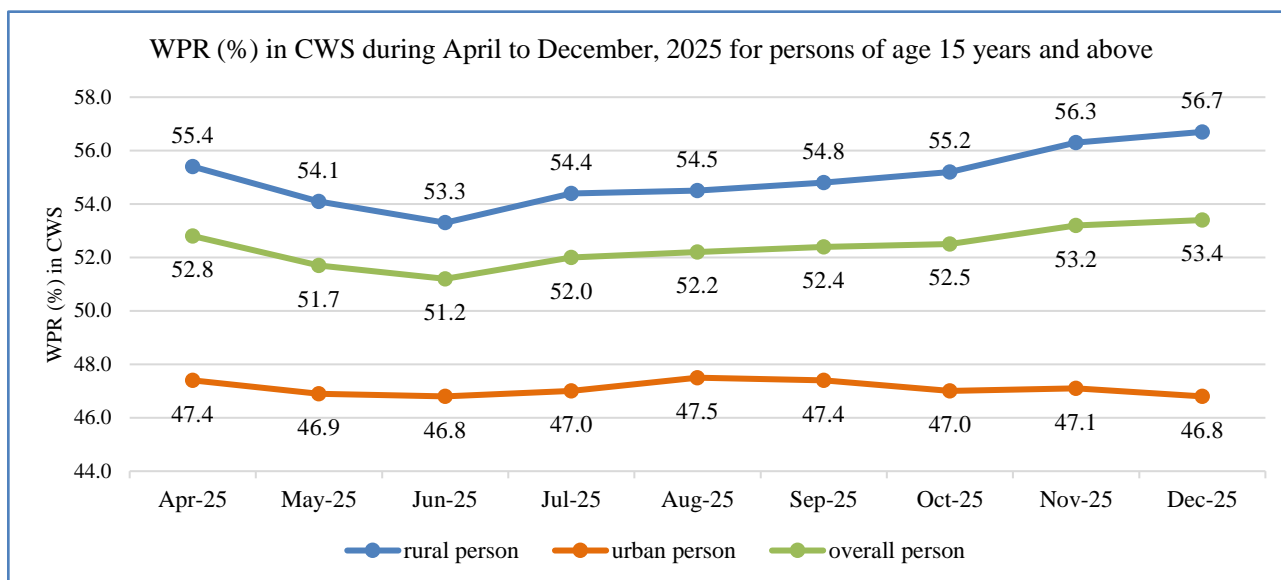
Rural female LFPR continued its gradual rise, reaching 40.1% in December, 2025, up from 39.7% in November, 2025.

- **WPR witnessed steady rise:**

The Worker Population Ratio (WPR) in the age group 15 years and above showed a gradual improvement in December, 2025. Among rural male, WPR edged up to 76.0% in December, 2025 from 75.4% in November, 2025 while urban male WPR observed decline from 70.9% in November, 2025 to 70.4% in December, 2025, pushing overall male WPR to 74.1%.

Rural female WPR rose marginally from 38.4% to 38.6% during this period, while urban female WPR was around 23.0%, leading to an overall female WPR of 33.6% in December, 2025 from 33.4% observed in November, 2025. The overall WPR for persons observed as 53.4% in December, 2025 against 53.2% in November, 2025.

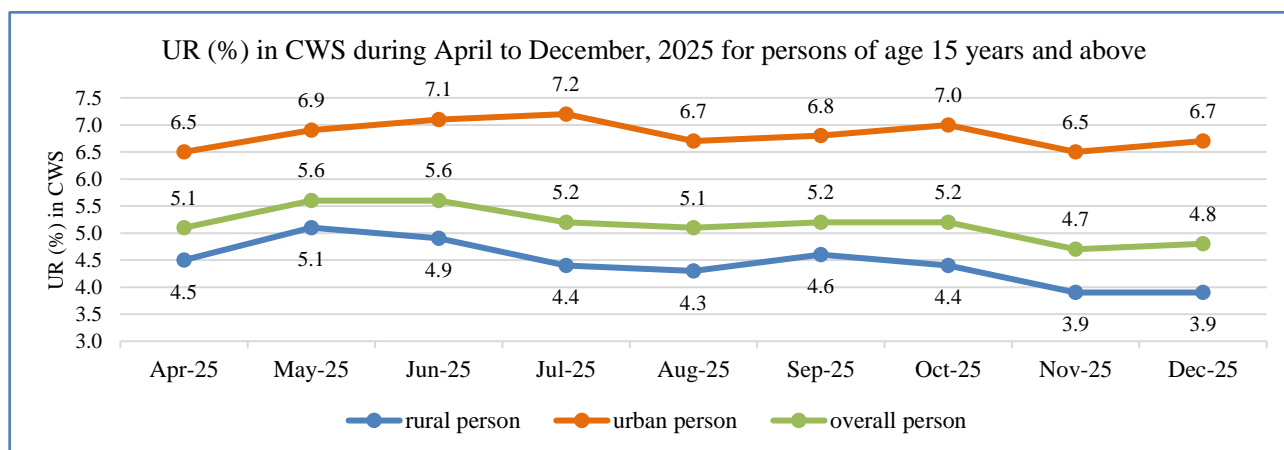




The overall workforce remained steady, rising marginally to 53.4% in December, 2025 from 53.2% in November, 2025.

- Overall Unemployment Rate (UR) remains broadly stable:**

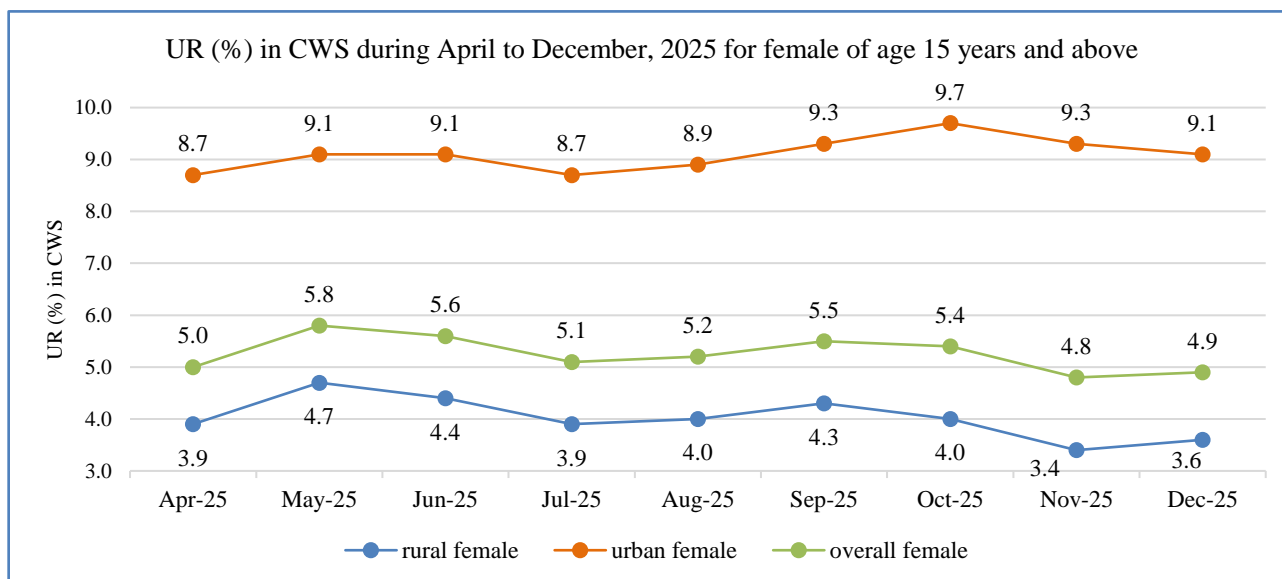
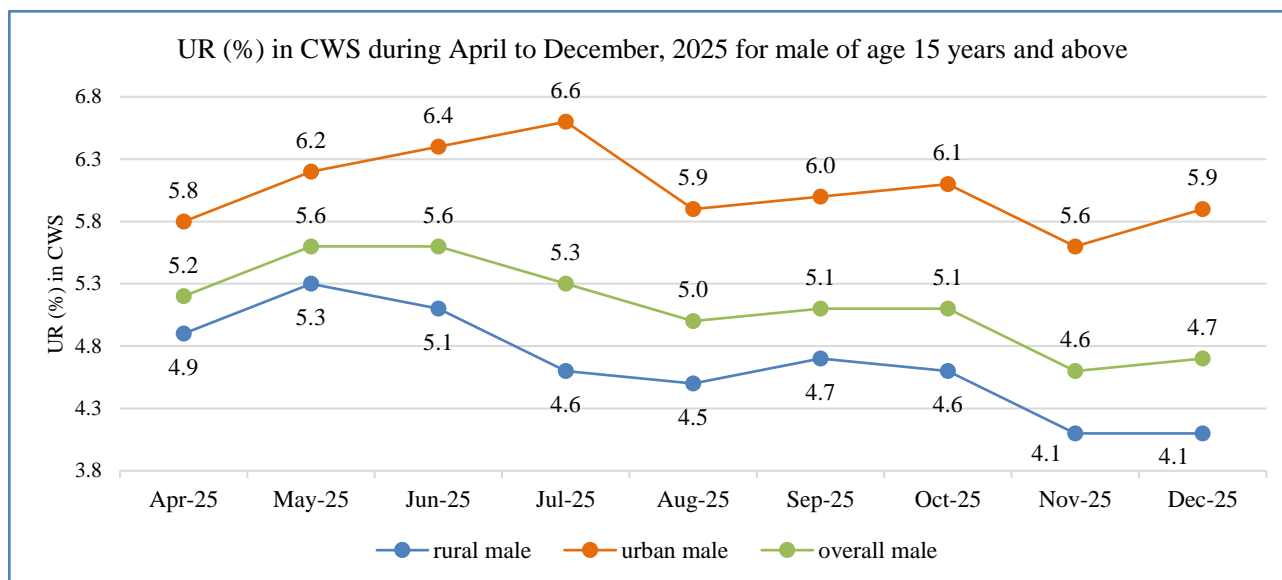
The UR among persons of age 15 years and above remained largely stable in December, 2025. The overall UR is estimated at 4.8% in December, 2025, compared to 4.7% observed in November, 2025. The rural UR remained stagnant at 3.9%, while the urban UR increased to 6.7% from 6.5% in the previous month.



Rural UR continued to stay low at 3.9% in December, 2025, unchanged from November, 2025.

- **Rural male UR stable, urban female declines:**


Among rural male aged 15 years and above, the UR remained low and stable at 4.1% in December, 2025. Further, the urban female UR moderated to 9.1% in December, 2025, compared to 9.3% in November, 2025. The UR in the remaining gender-sector increased slightly, though it continued to remain below the levels observed during the mid-year months.



**At the all-India level, the monthly estimates are based on information collected from a total number of 3,73,990 persons surveyed.**

**persons surveyed in rural areas**  
**2,13,216**

**persons surveyed in urban areas**  
**1,60,774**

<p>The Monthly Bulletin for the month December, 2025 is available on the website of the Ministry (<a href="https://www.mospi.gov.in">https://www.mospi.gov.in</a>).</p>	<p><b>Scan QR code to access MoSPI Publications/ Reports</b></p> 
---	--

\*\*\*