



GOVERNMENT OF INDIA
MINISTRY OF STATISTICS AND PROGRAMME IMPLEMENTATION

PRESS NOTE

PROVISIONAL ESTIMATES OF ANNUAL GROSS DOMESTIC PRODUCT FOR 2025-26
AND
QUARTERLY ESTIMATES OF GROSS DOMESTIC PRODUCT FOR THE FOURTH
QUARTER (JANUARY-MARCH) OF 2025-26

Dated 15th Jyestha, 1948 Saka
5th June, 2026

The Ministry of Statistics and Programme Implementation (MoSPI) is releasing in this Press Note, the **Provisional Estimates (PE) of Annual Gross Domestic Product (GDP) for the Financial Year (2025-26) and Quarterly Estimates of GDP for the Fourth Quarter (Q4, January-March) of FY 2025-26** along with its Expenditure components both at Constant (2022-23) and Current prices. The Ministry has released the **New Series of Annual and Quarterly GDP estimates with base year 2022-23 on 27th February, 2026**. In that release, the Quarterly GDP estimates and other aggregates were published from Q1 (April-June) of 2022-23 to Q3 (October-December) of FY 2025-26. Consequently, the Second Advance Estimates released on February, 2026 was based on information available for the FY 2025-26 upto Q3. Now, on account of information received for the Q4 of FY 2025-26, the Annual Estimates for the FY 2025-26 have been revised and being released in this press note. The press release is structured as follows.

<u>I</u>	Annual GDP Estimates and Growth Rates
<u>II</u>	Quarterly GDP Estimates and Growth Rates
<u>III</u>	Methodology and Major Data Sources
<u>IV</u>	<p><u>Statements:</u></p> <ul style="list-style-type: none"> • Provisional Estimates of GDP along with Expenditure Components and National Income at Constant and Current Prices (Table 1 and 2) • Provisional Estimates of Gross Value Added (GVA) at Constant and Current Prices (Table 3 & 4) • Quarterly GDP Estimates along with Expenditure Components at Constant and Current Prices (Table 5, 6, 7 & 8)
<u>Annexure</u>	<ul style="list-style-type: none"> • Year-on-Year (Y-o-Y) Growth Rates in Indicators

KEY HIGHLIGHTS

- ❖ **Real GDP has been estimated to grow by 7.7% in FY 2025-26. Nominal GDP has witnessed a growth of 8.9%.**
 - ✚ **Real and Nominal GVA has been assessed to grow by 7.9% and 9.1% respectively in FY 2025-26.**
 - ✚ **Secondary and Tertiary sector have boosted the performance of the economy by registering growths of 8.8% and 9.3% respectively at Constant prices.**
 - ✚ **The Primary sector has observed 3.2% growth rate mainly driven by the performance of Agriculture and Fishery sectors.**
 - ✚ **'Manufacturing', 'Trade, Repair, Hotels, Transport, Communication & Services related to Broadcasting, Storage' and 'Financial, Real Estate & Professional Services' sectors have attained double-digit growth at both Constant and Current Prices in FY 2025-26.**
 - ✚ **On the Expenditure- side, both the Private Final Consumption Expenditure (PFCE) and Gross Fixed Capital Formation (GFCF) have exhibited more than 7.5% growth rate in FY 2025-26.**
- ❖ **In the Q4 of FY 2025-26, Real GDP has been estimated to grow by 7.8% in FY 2025-26. Nominal GDP has observed a growth of 9.1%.**
 - ✚ **Real and Nominal GVA has been assessed to grow by 7.9% and 9.9% respectively in Q4 of FY 2025-26.**
 - ✚ **Secondary and Tertiary sector have been the major driver for the Real and Nominal GVA growths of 7.9% and 9.9% respectively in Q4 of FY 2025-26.**
 - ✚ **GFCF has recorded 10.8% growth rate and PFCE has witnessed 7.1% growth at Constant prices in the Fourth quarter of FY 2025-26.**

I. Annual GDP Estimates and Growth Rates

Real GDP or GDP at Constant Prices is estimated to attain a level of **₹323.12 lakh crore in the FY 2025-26**, against the **First Revised Estimate (FRE) of GDP for the year 2024-25 of ₹299.89 lakh crore**. The growth rate in Real GDP during 2025-26 is estimated at **7.7%** as compared to **7.1 % in 2024-25**. Nominal GDP or GDP at Current Prices is estimated to attain a level of **₹346.36 lakh crore in the year 2025-26**, against **₹318.07 lakh crore in 2024-25**, showing a growth rate of **8.9%**.

Real GVA is estimated at **₹294.91 lakh crore in the year 2025-26**, against **₹273.36 lakh crore in FY 2024-25**, registering a growth rate of **7.9%** as compared to **7.3% growth rate in 2024-25**. Nominal GVA is estimated to attain a level of **₹314.87 lakh crore during FY 2025-26**, against **₹288.54 lakh crore in 2024-25**, showing a growth rate of **9.1%**.

Fig. 1: Annual GDP and GVA Estimates along with Y-o-Y Growth Rates at Constant Prices

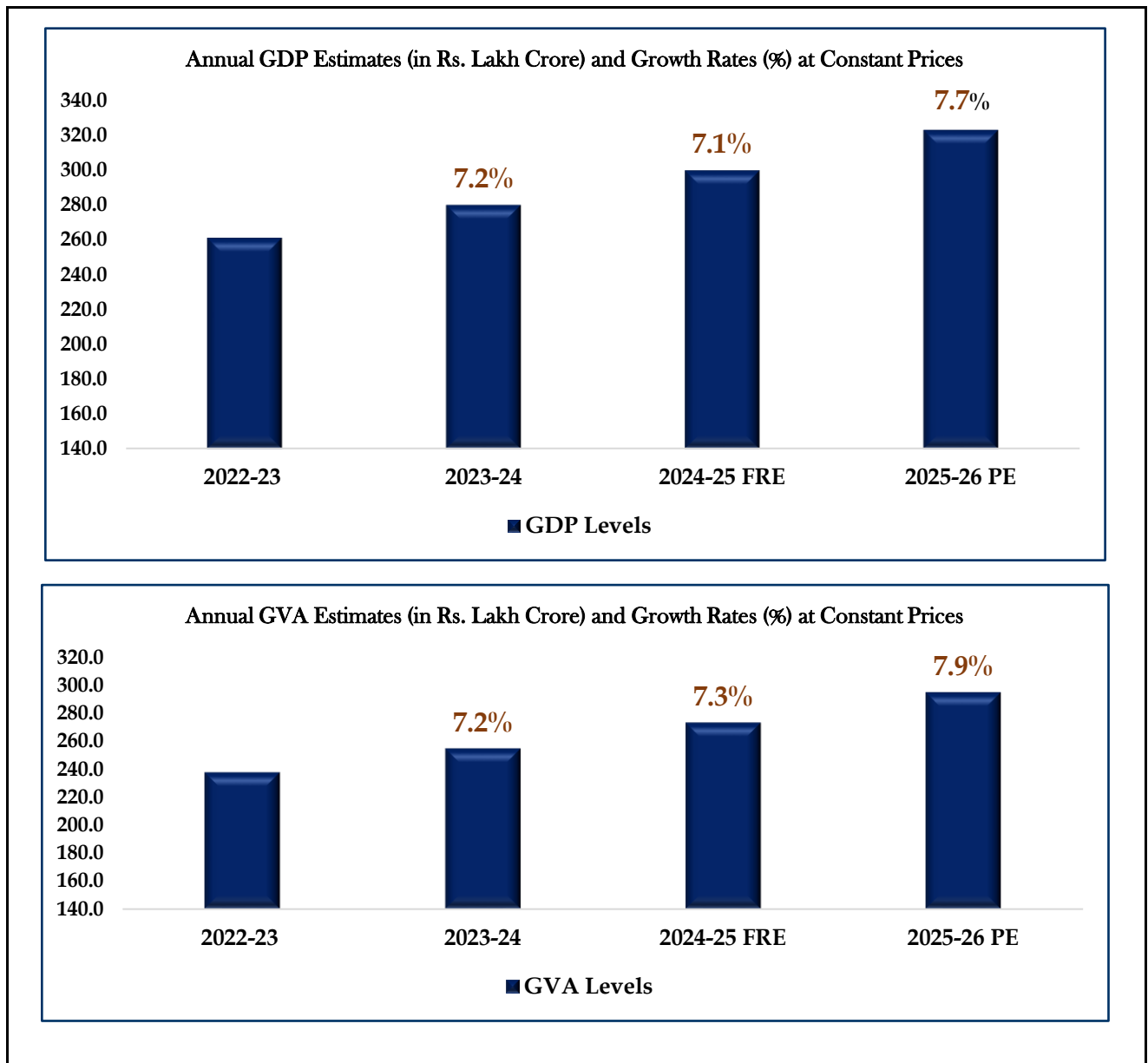
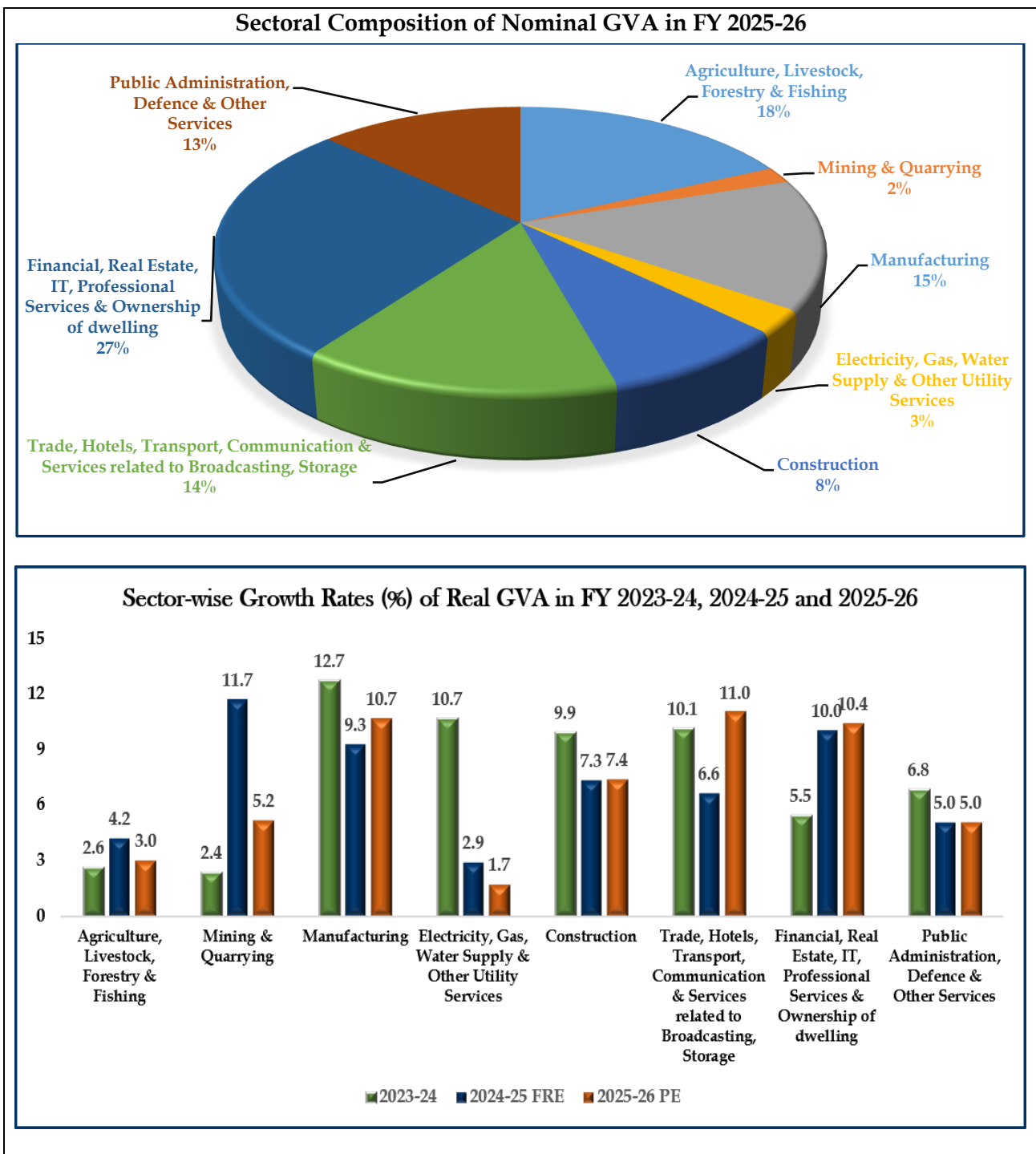
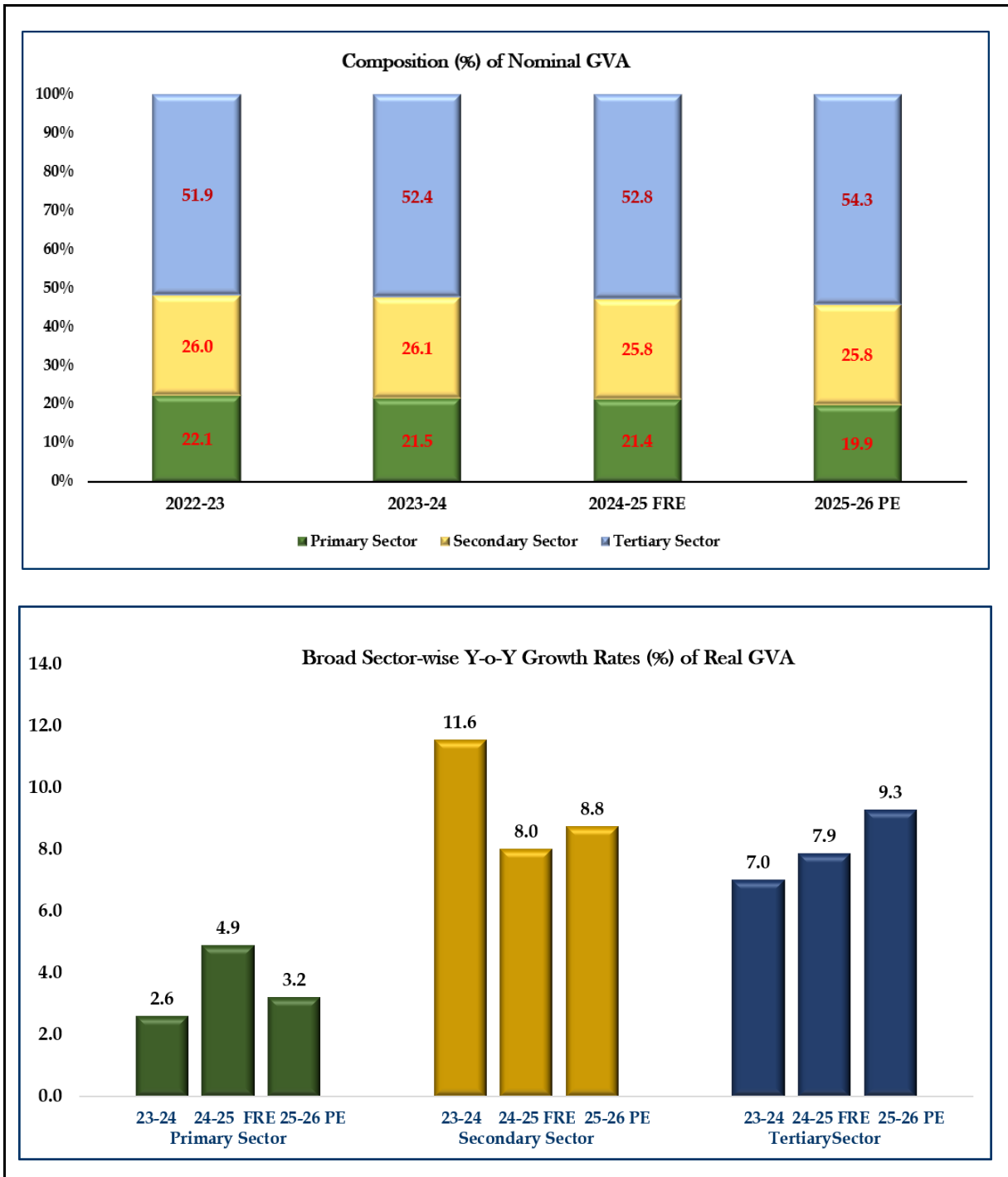


Fig. 2: Sectoral Composition and Growth Rates of Annual GVA



*Public Administration, Defence & Other Services category includes the Other Services sector i.e. Education, Health, Recreation, and other personal services

Fig. 3: Composition and Growth Rates of Annual GVA in Broad Sectors



[Primary Sector: Agriculture, Livestock, Forestry & Fishing and Mining & Quarrying
 Secondary Sector: Manufacturing; Electricity, Gas, Water supply & Other Utility Services and Construction
 Tertiary Sector: Trade, Hotels, Transport, Communication and Services related to Broadcasting, Storage; Financial, Real Estate, IT, & Professional Services, Ownership of Dwelling and Public Administration, Defence & Other Services]

II. Quarterly Estimates and Growth Rates

Real GDP or GDP at Constant Prices in Q4 of FY 2025-26 is estimated at ₹87.77 lakh crore, against ₹81.40 lakh crore in Q4 of FY 2024-25, showing a growth rate of 7.8%. Nominal GDP or GDP at Current Prices in Q4 of FY 2025-26 is estimated at ₹94.65 lakh crore, against ₹86.75 lakh crore in Q4 of FY 2024-25, showing a growth rate of 9.1%.

Real GVA in Q4 of FY 2025-26 is estimated at ₹80.18 lakh crore, against ₹74.32 lakh crore in Q4 of FY 2024-25, showing a growth rate of 7.9%. Nominal GVA in Q4 of FY 2025-26 is estimated at ₹86.46 lakh crore, against ₹78.68 lakh crore in Q4 of FY 2024-25, showing a growth rate of 9.9%.

Fig. 4: Quarterly GDP and GVA Estimates along with Y-o-Y Growth Rates at Constant Prices

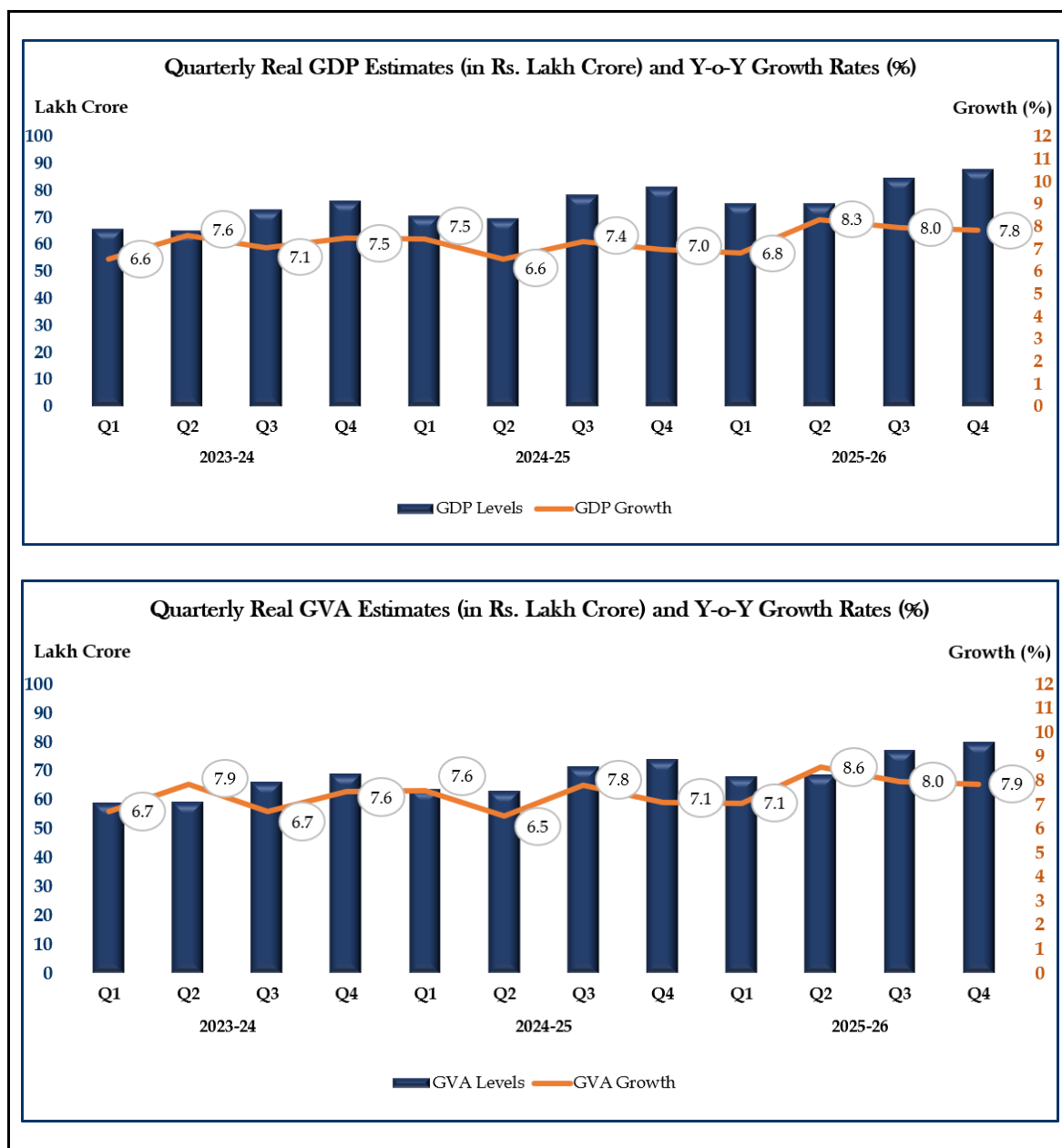
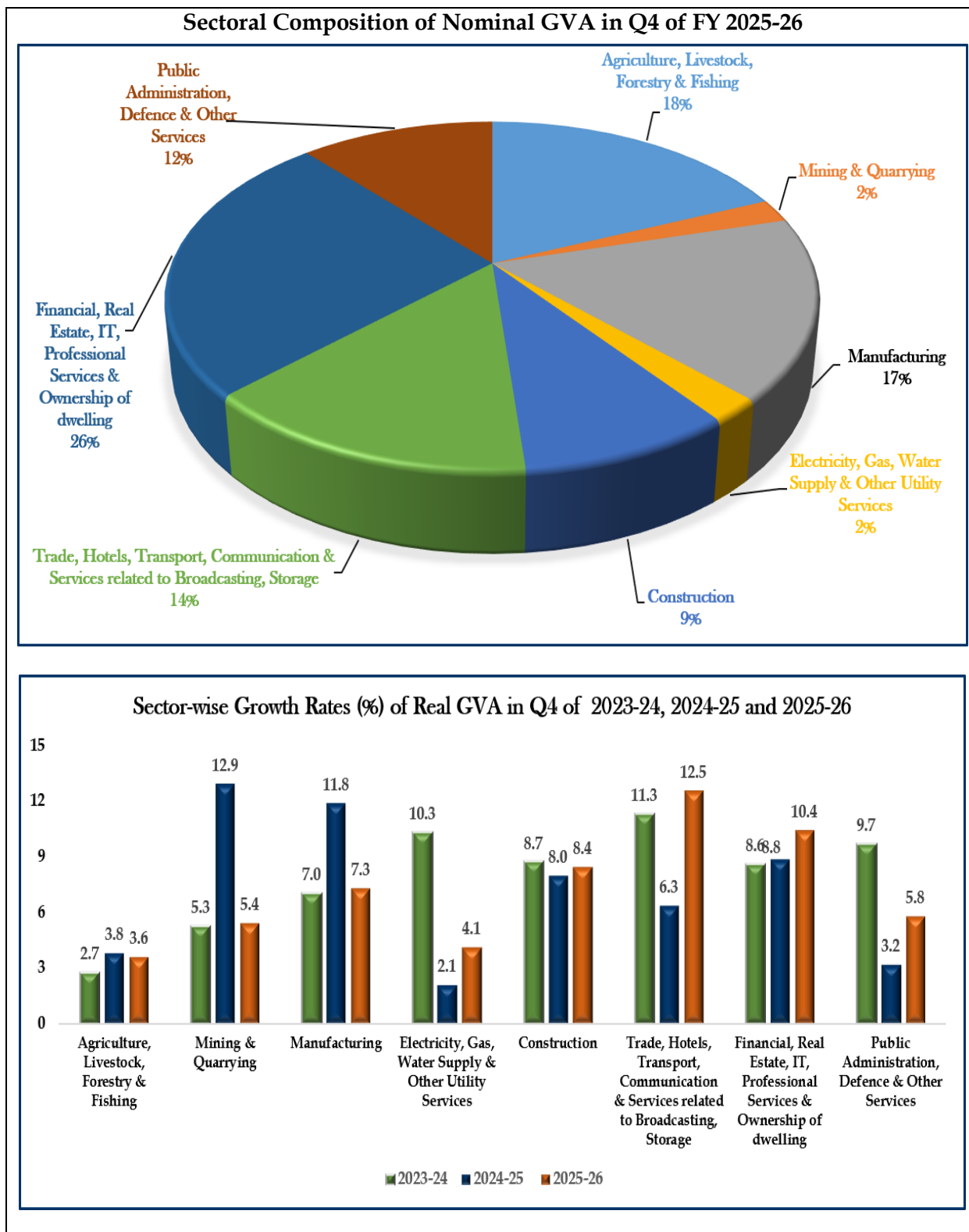
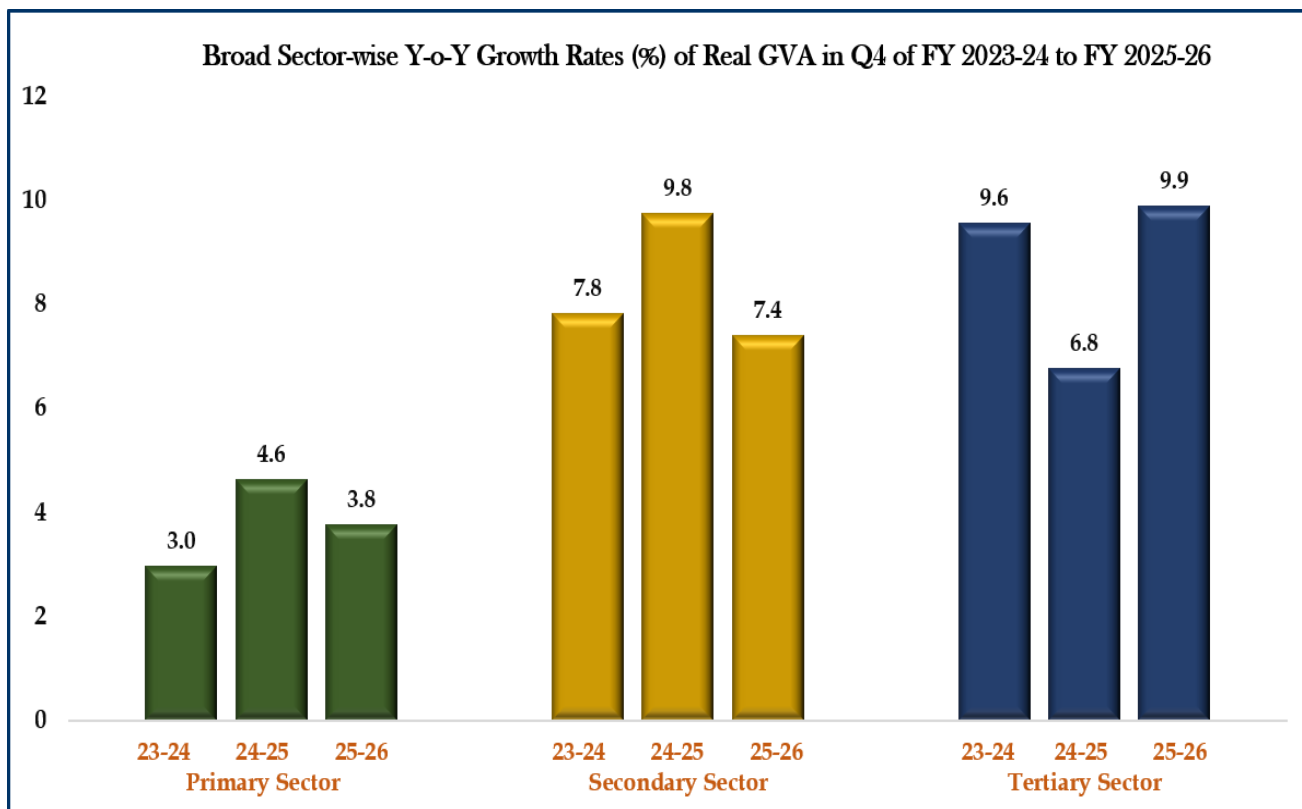
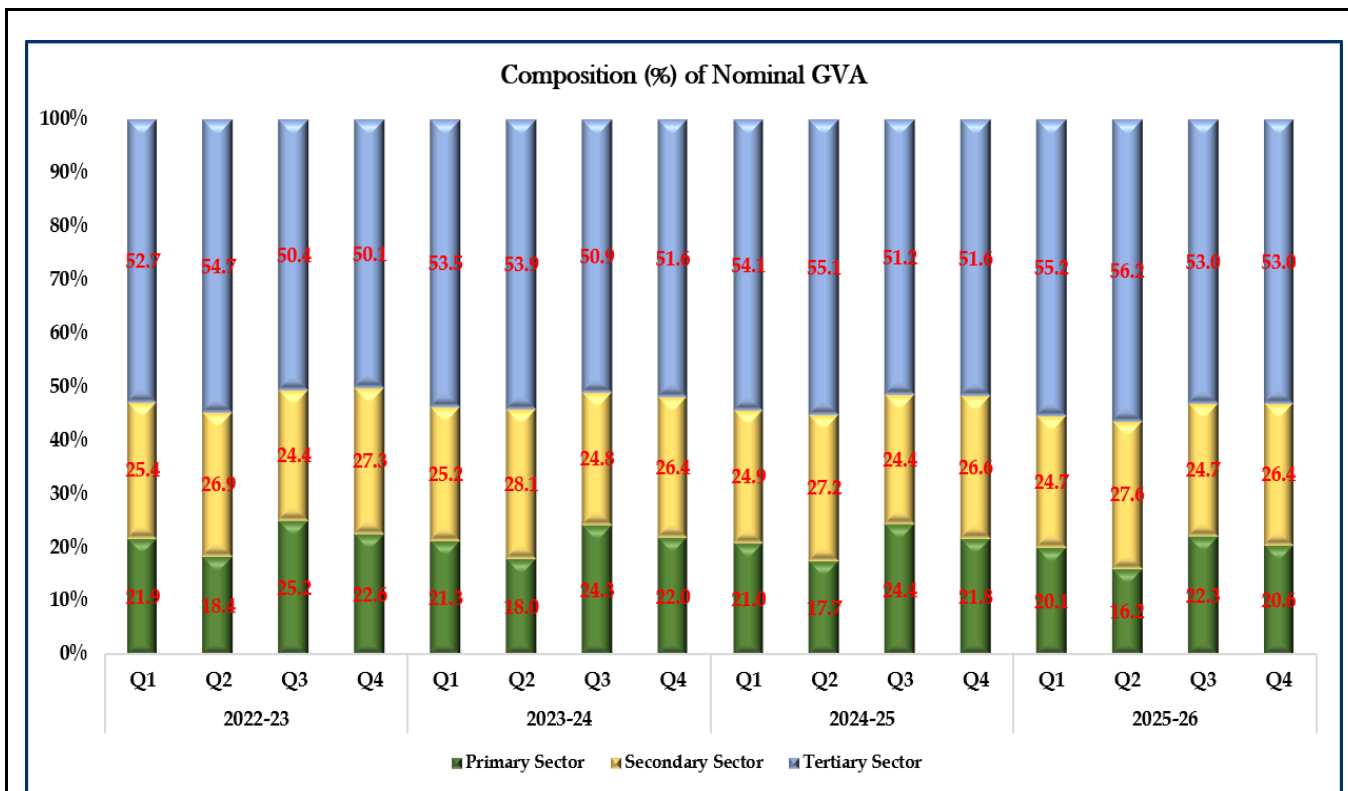


Fig. 5: Sectoral Composition and Growth Rates of Quarterly GVA



*Public Administration, Defence & Other Services category includes the Other Services sector i.e. Education, Health, Recreation, and other personal services

Fig. 6: Composition and Growth Rates of Quarterly GVA in Broad Sectors



[Primary Sector: Agriculture, Livestock, Forestry & Fishing and Mining & Quarrying
 Secondary Sector: Manufacturing; Electricity, Gas, Water supply & Other Utility Services and Construction
 Tertiary Sector: Trade, Hotels, Transport, Communication and Services related to Broadcasting, Storage; Financial, Real Estate, IT, & Professional Services, Ownership of Dwelling and Public Administration, Defence & Other Services]

III. Methodology and Major Data Sources:

The compilation of Provisional Estimates (PE) of Annual GDP and Quarterly Estimates of GDP is based on Benchmark-Indicator methodology in which the estimates computed for the previous financial year are extrapolated using the relevant indicators reflecting the performance of various economic and institutional sectors. The Second Advance Estimate (SAE) of the Annual GDP for the FY 2025-26 released on 27th February, 2026 has mostly incorporated the information available upto Q3 of FY 2025-26. Subsequently, Sector-wise as well as Expenditure-side information have now been available for the Q4 of FY 2025-26 including the updated information on indicators for the previous quarters. Therefore, Provisional Estimates of GDP have been compiled based on aggregating all the quarterly estimates. The major indicators along with price indices used for the compilation of GDP are listed as follows,

Production-side Indicators and Price Indices:

- Advance Estimates of Crop Production
- Production of Inland and Marine Fish
- Season-wise Production of Major Livestock Products
- Index of Industrial Production (IIP)
- Index of Eight Core Industries
- Consumption of Natural Gas
- Financial Results of Listed Companies in BSE/NSE
- GST data
- Consumption of Steel
- Domestic Sales of Commercial Vehicles and Three Wheelers
- Domestic and International Air Traffic Statistics
- Railway Net Tonne, Passenger Km., Goods and Passenger earning information
- Cargo Handled at Major and Minor Ports
- Wireless Data Usage, Minutes of Usage, Internet Telephony, Telephone Subscribers, Revenue share from Calls and Data usage information
- Bank-wise Loan, Deposit, Interest information
- Loan, Deposit, Interest information of Non-Banking Financial Corporation
- Information on Revenue Account, Profit-Loss Account, Operating Expenses for Life and Non-Life Insurance companies
- Public Financial Management System (PFMS) data of Central Government
- Taxes, Subsidy information of State Governments from CAG
- Taxes, Subsidy information of Central Government from CGA
- Granular level Consumer Price Index (CPI)
- Granular level Wholesale Price Index (WPI)

Expenditure-side Indicators and Price Indices:

- Balance of Payment Table of RBI
- Vehicle category and class-wise Registration (from *e-VAHAN*) and Sales information
- Index of Industrial Production (IIP)

- Public Financial Management System (PFMS) data of Central Government
- Salary information of State Governments from CAG
- Principal Commodity and HSN-wise Import and Export of Goods
- Food Grain Offtake information
- Granular level Consumer Price Index (CPI)
- Granular level Wholesale Price Index (WPI)
- Principal Commodity-wise Unit Value Index (UVI)

The estimates of Quarterly GDP as per base year 2022-23 majorly follow the guidelines, standards as mentioned in Quarterly National Accounts Manual of International Monetary Fund (IMF), 2017. A brief of Revised Methodology, Data Sources, and Deflation strategy in the new series of quarterly GDP estimates with base year 2022-23 has been provided in the Press Note released on February, 2026. The Methodology and data sources used in the compilation will be presented comprehensively in the publication '*Sources and Methods*' scheduled for its release by August, 2026.

The Annual and Quarterly National Accounts estimates will incorporate the revised IIP and WPI/PPI series with base year 2022-23, and the updated estimates will be released at the time of next press release of Quarterly GDP estimates for the First Quarter (April-June) of FY 2026-27 (Q1, 2026-27) scheduled on **31st August 2026**.

IV. Statements

Statement 1: Provisional Estimates of GDP along with Expenditure Components and National Income at Constant Prices

Sl. No.	Item	2022-23	2023-24	2024-25 (FRE)	2025-26 (PE)	Percentage Change Over Previous Year		
						2023-24	2024-25	2025-26
Domestic Product								
1	GVA at Basic Prices	2,37,63,761	2,54,81,220	2,73,36,495	2,94,91,088	7.2	7.3	7.9
2	Net Taxes on Products	23,53,866	25,19,547	26,52,124	28,20,946	7.0	5.3	6.4
3	Gross Domestic Product (GDP)	2,61,17,627	2,80,00,767	2,99,88,619	3,23,12,034	7.2	7.1	7.7
4	Net Domestic Product (NDP)	2,24,35,361	2,41,44,123	2,59,29,189	2,79,32,650	7.6	7.4	7.7
Expenditure Components								
5	Private Final Consumption Expenditure (PFCE)	1,49,22,828	1,57,85,257	1,66,99,851	1,79,93,871	5.8	5.8	7.7
6	Government Final Consumption Expenditure (GFCE)	28,90,910	29,07,652	30,95,570	32,64,882	0.6	6.5	5.5
7	Gross Fixed Capital Formation (GFCF)	84,53,506	90,66,633	96,47,792	1,04,34,799	7.3	6.4	8.2
8	Changes in Stocks (CIS)	1,73,370	3,76,012	3,82,573	4,22,320	116.9	1.7	10.4
9	Valuables	3,60,668	3,27,047	3,33,382	3,03,210	-9.3	1.9	-9.1
10	Exports	62,78,722	63,23,241	67,37,996	71,64,918	0.7	6.6	6.3
11	Imports	69,62,377	68,90,492	72,56,195	76,61,875	-1.0	5.3	5.6
12	Discrepancies	0	1,05,418	3,47,650	3,89,909	0.4	1.2	1.2
13	GDP	2,61,17,627	2,80,00,767	2,99,88,619	3,23,12,034	7.2	7.1	7.7
Share in GDP (%)								
14	Private Final Consumption Expenditure (PFCE)	57.1	56.4	55.7	55.7			
15	Government Final Consumption Expenditure (GFCE)	11.1	10.4	10.3	10.1			
16	Gross Fixed Capital Formation (GFCF)	32.4	32.4	32.2	32.3			
17	Changes in Stocks (CIS)	0.7	1.3	1.3	1.3			
18	Valuables	1.4	1.2	1.1	0.9			
19	Exports	24.0	22.6	22.5	22.2			
20	Imports	26.7	24.6	24.2	23.7			
21	Discrepancies	0.0	0.4	1.2	1.2			
22	GDP	100.0	100.0	100.0	100.0			
National Income								
23	Gross National Income (GNI)	2,57,47,320	2,76,01,101	2,95,69,422	3,18,65,977	7.2	7.1	7.8
24	Net National Income (NNI)	2,20,65,054	2,37,44,458	2,55,09,992	2,74,86,593	7.6	7.4	7.7
Per Capita Income, GDP and Final Consumption								
25	Population (in million)	1383	1395	1408	1421			
26	Per Capita GDP (₹)	1,88,862	2,00,654	2,12,979	2,27,447	6.2	6.1	6.8
27	Per Capita GNI (₹)	1,86,184	1,97,790	2,10,002	2,24,307	6.2	6.2	6.8
28	Per Capita NNI (₹)	1,59,557	1,70,153	1,81,172	1,93,480	6.6	6.5	6.8
29	Per Capita PFCE (₹)	1,07,910	1,13,117	1,18,602	1,26,660	4.8	4.8	6.8

* Values are (in ₹ Crore); Totals may vary slightly due to rounding off

In case of Discrepancy % share is GDP is given instead of percentage change over previous year.

FRE: First Revised Estimates; PE: Provisional Estimates

Statement 2: Provisional Estimates of GDP along with Expenditure Components and National Income at Current Prices

Sl. No.	Item	2022-23	2023-24	2024-25 (FRE)	2025-26 (PE)	Percentage Change Over Previous Year		
						2023-24	2024-25	2025-26
Domestic Product								
1	GVA at Basic Prices	2,37,63,761	2,63,16,103	2,88,54,467	3,14,86,840	10.7	9.6	9.1
2	Net Taxes on Products	23,53,866	26,67,807	29,52,841	31,48,798	13.3	10.7	6.6
3	Gross Domestic Product (GDP)	2,61,17,627	2,89,83,909	3,18,07,309	3,46,35,638	11.0	9.7	8.9
4	Net Domestic Product (NDP)	2,24,35,361	2,50,37,329	2,75,52,926	2,99,93,131	11.6	10.0	8.9
Expenditure Components								
5	Private Final Consumption Expenditure (PFCE)	1,49,22,828	1,63,76,825	1,79,70,609	1,96,50,901	9.7	9.7	9.4
6	Government Final Consumption Expenditure (GFCE)	28,90,909	30,73,888	33,95,336	36,91,021	6.3	10.5	8.7
7	Gross Fixed Capital Formation (GFCF)	84,53,506	92,45,752	1,00,64,927	1,10,63,644	9.4	8.9	9.9
8	Changes in Stocks (CIS)	1,73,370	3,78,823	3,82,300	4,16,374	118.5	0.9	8.9
9	Valuables	3,60,668	3,76,232	4,77,281	6,94,244	4.3	26.9	45.5
10	Exports	62,78,722	64,79,296	70,17,959	76,72,737	3.2	8.3	9.3
11	Imports	69,62,376	69,46,907	75,86,905	84,40,534	-0.2	9.2	11.3
12	Discrepancies	0	0	85,801	-1,12,748	0.0	0.3	-0.3
13	GDP	2,61,17,627	2,89,83,909	3,18,07,309	3,46,35,638	11.0	9.7	8.9
Share in GDP(%)								
14	Private Final Consumption Expenditure (PFCE)	57.1	56.5	56.5	56.7			
15	Government Final Consumption Expenditure (GFCE)	11.1	10.6	10.7	10.7			
16	Gross Fixed Capital Formation (GFCF)	32.4	31.9	31.6	31.9			
17	Changes in Stocks (CIS)	0.7	1.3	1.2	1.2			
18	Valuables	1.4	1.3	1.5	2.0			
19	Exports	24.0	22.4	22.1	22.2			
20	Imports	26.7	24.0	23.9	24.4			
21	Discrepancies	0.0	0.0	0.3	-0.3			
22	GDP	100.0	100.0	100.0	100.0			
National Income								
23	Gross National Income (GNI)	2,57,47,320	2,85,71,913	3,13,98,006	3,42,04,634	11.0	9.9	8.9
24	Net National Income (NNI)	2,20,65,054	2,46,25,333	2,71,43,623	2,95,62,127	11.6	10.2	8.9
25	Gross National Disposable Income (GNDI)	2,65,66,532	2,94,55,128	3,24,51,963	3,54,01,638	10.9	10.2	9.1
26	Net National Disposable Income (NNDI)	2,28,84,266	2,55,08,548	2,81,97,581	3,07,59,131	11.5	10.5	9.1
Per Capita Income, GDP and Final Consumption								
27	Per Capita GDP (₹)	1,88,862	2,07,699	2,25,896	2,43,803	10.0	8.8	7.9
28	Per Capita GNI (₹)	1,86,184	2,04,746	2,22,989	2,40,769	10.0	8.9	8.0
29	Per Capita NNI (₹)	1,59,557	1,76,465	1,92,774	2,08,090	10.6	9.2	7.9
30	Per Capita GNDI (₹)	1,92,108	2,11,076	2,30,474	2,49,195	9.9	9.2	8.1
31	Per Capita PFCE (₹)	1,07,910	1,17,356	1,27,627	1,38,324	8.8	8.8	8.4

* Values are (in ₹ Crore); Totals may vary slightly due to rounding off

In case of Discrepancy % share is GDP is given instead of percentage change over previous year.

FRE: First Revised Estimates; PE: Provisional Estimates

Statement 3: Provisional Estimates of GVA by Economic Activity at Constant Prices

Sector	2022-23	2023-24	2024-25 (FRE)	2025-26 (PE)	Percentage Change Over Previous Year		
					2023-24	2024-25	2025-26
1. Primary Sector	52,62,211	53,99,628	56,64,100	58,46,645	2.6	4.9	3.2
1.1 Agriculture, Livestock, Forestry & Fishing	47,56,194	48,81,626	50,85,532	52,38,265	2.6	4.2	3.0
1.2. Mining & Quarrying	5,06,017	5,18,002	5,78,568	6,08,380	2.4	11.7	5.2
2. Secondary Sector	61,81,147	68,95,703	74,48,192	81,00,534	11.6	8.0	8.8
2.1. Manufacturing	34,82,190	39,24,673	42,89,237	47,46,800	12.7	9.3	10.7
2.2. Electricity, Gas, Water Supply & Other Utility Services	5,89,857	6,52,765	6,71,525	6,83,191	10.7	2.9	1.7
2.3. Construction	21,09,100	23,18,266	24,87,430	26,70,543	9.9	7.3	7.4
3. Tertiary Sector	1,23,20,403	1,31,85,889	1,42,24,202	1,55,43,910	7.0	7.9	9.3
3.1 Trade, Hotels, Transport, Communication & Services related to Broadcasting, Storage	32,64,387	35,94,281	38,31,991	42,54,239	10.1	6.6	11.0
3.2 Financial, Real Estate, IT, Professional Services & Ownership of Dwelling	60,18,587	63,46,959	69,83,733	77,09,678	5.5	10.0	10.4
3.3 Public Administration, Defence & Other Services	30,37,429	32,44,649	34,08,479	35,79,993	6.8	5.0	5.0
GVA at Basic Prices	2,37,63,761	2,54,81,220	2,73,36,495	2,94,91,088	7.2	7.3	7.9

* Values are (in ₹ Crore); Totals may vary slightly due to rounding off
FRE: First Revised Estimates; PE: Provisional Estimates

Statement 4: Provisional Estimates of GVA by Economic Activity at Current Prices

Sector	2022-23	2023-24	2024-25 (FRE)	2025-26 (PE)	Percentage Change Over Previous Year		
					2023-24	2024-25	2025-26
1. Primary Sector	52,62,211	56,55,585	61,62,243	62,63,726	7.5	9.0	1.6
1.1 Agriculture, Livestock, Forestry & Fishing	47,56,194	51,17,555	55,89,683	56,65,300	7.6	9.2	1.4
1.2. Mining & Quarrying	5,06,017	5,38,030	5,72,560	5,98,426	6.3	6.4	4.5
2. Secondary Sector	61,81,147	68,68,100	74,34,059	81,38,411	11.1	8.2	9.5
2.1. Manufacturing	34,82,190	38,58,583	41,79,232	46,62,442	10.8	8.3	11.6
2.2. Electricity, Gas, Water Supply & Other Utility Services	5,89,857	7,32,200	8,05,619	8,20,895	24.1	10.0	1.9
2.3. Construction	21,09,100	22,77,317	24,49,208	26,55,075	8.0	7.5	8.4
3. Tertiary Sector	1,23,20,403	1,37,92,418	1,52,58,165	1,70,84,704	11.9	10.6	12.0
3.1 Trade, Hotels, Transport, Communication & Services related to Broadcasting, Storage	32,64,387	37,14,571	39,97,995	44,92,012	13.8	7.6	12.4
3.2 Financial, Real Estate, IT, Professional Services & Ownership of Dwelling	60,18,587	66,73,409	75,49,124	85,12,041	10.9	13.1	12.8
3.3 Public Administration, Defence & Other Services	30,37,429	34,04,438	37,11,046	40,80,651	12.1	9.0	10.0
GVA at Basic Prices	2,37,63,761	2,63,16,103	2,88,54,467	3,14,86,840	10.7	9.6	9.1

* Values are (in ₹ Crore); Totals may vary slightly due to rounding off
FRE: First Revised Estimates; PE: Provisional Estimates

Statement 5: Quarterly GDP Estimates along with Expenditure Components at Constant Prices

Sector	2022-23				2023-24				2024-25				2025-26			
	Q1	Q2	Q3	Q4	Q1	Q2	Q3	Q4	Q1	Q2	Q3	Q4	Q1	Q2	Q3	Q4
1. Primary Sector	11,99,258	10,10,987	15,70,299	14,81,666	12,47,031	10,34,296	15,92,478	15,25,822	12,91,460	10,81,691	16,94,225	15,96,724	13,47,906	11,15,029	17,26,820	16,56,890
1.1 Agriculture, Livestock, Forestry & Fishing	10,72,011	8,98,617	14,42,586	13,42,979	11,20,109	9,18,857	14,62,835	13,79,825	11,49,432	9,56,617	15,47,579	14,31,905	11,99,506	9,82,357	15,73,233	14,83,169
1.2. Mining & Quarrying	1,27,247	1,12,370	1,27,713	1,38,687	1,26,922	1,15,439	1,29,643	1,45,997	1,42,028	1,25,074	1,46,646	1,64,819	1,48,400	1,32,672	1,53,587	1,73,721
2. Secondary Sector	14,06,503	14,85,468	15,24,464	17,64,712	15,33,743	17,41,040	17,18,075	19,02,845	16,73,213	18,24,859	18,61,578	20,88,541	17,94,582	20,18,423	20,44,447	22,43,081
2.1. Manufacturing	7,47,724	8,34,358	8,46,430	10,53,679	8,17,082	10,04,624	9,75,448	11,27,519	8,93,533	10,54,181	10,80,557	12,60,966	9,86,322	11,88,275	12,19,292	13,52,911
2.2. Electricity, Gas, Water Supply & Other Utility Services	1,53,944	1,49,589	1,39,321	1,47,003	1,62,609	1,71,080	1,56,903	1,62,173	1,77,517	1,70,679	1,57,819	1,65,511	1,73,882	1,76,826	1,60,174	1,72,310
2.3. Construction	5,04,836	5,01,521	5,38,713	5,64,030	5,54,053	5,65,336	5,85,724	6,13,153	6,02,164	6,00,000	6,23,202	6,62,064	6,34,379	6,53,322	6,64,982	7,17,860
3. Tertiary Sector	29,50,438	30,25,285	31,42,129	32,02,552	31,49,990	31,80,545	33,46,176	35,09,179	34,17,795	34,38,623	36,20,908	37,46,877	36,92,234	37,55,732	39,78,229	41,17,714
3.1 Trade, Hotels, Transport, Communication & Services related to Broadcasting, Storage	7,73,264	7,88,551	8,43,069	8,59,504	8,55,155	8,65,207	9,17,592	9,56,327	9,14,039	9,22,265	9,78,797	10,16,889	10,02,420	10,19,510	10,88,099	11,44,210
3.2 Financial, Real Estate, Ownership of dwelling, IT & Professional Services	14,28,979	15,05,238	15,13,454	15,70,915	15,02,218	15,53,315	15,85,573	17,05,852	16,56,648	17,08,670	17,62,211	18,56,204	18,08,793	18,84,765	19,66,683	20,49,437
3.3 Public Administration, Defence & Other Services	7,48,195	7,31,496	7,85,605	7,72,133	7,92,617	7,62,022	8,43,011	8,46,999	8,47,107	8,07,688	8,79,900	8,73,784	8,81,021	8,51,458	9,23,447	9,24,067
GVA at Basic Prices	55,56,199	55,21,740	62,36,892	64,48,930	59,30,764	59,55,881	66,56,729	69,37,846	63,82,468	63,45,173	71,76,711	74,32,142	68,34,723	68,89,183	77,49,497	80,17,685
Net Taxes	6,03,521	5,39,617	5,82,705	6,28,022	6,34,315	5,68,314	6,46,317	6,70,602	6,72,110	6,08,697	6,63,862	7,07,455	7,00,849	6,45,239	7,15,438	7,59,419
GDP	61,59,720	60,61,357	68,19,597	70,76,953	65,65,079	65,24,195	73,03,045	76,08,448	70,54,579	69,53,870	78,40,573	81,39,598	75,35,572	75,34,423	84,64,935	87,77,104
Expenditure Components																
1. Private Final Consumption Expenditure (PFCE)	34,39,803	33,69,229	39,67,916	41,45,880	36,60,131	35,47,025	41,82,410	43,95,691	38,82,451	37,44,336	44,31,993	46,41,071	42,19,738	40,12,153	47,93,358	49,68,622
2. Government Final Consumption Expenditure (GFCE)	7,59,252	7,32,127	7,11,942	6,87,590	7,58,504	7,25,777	7,18,536	7,04,835	8,15,390	7,76,536	7,73,141	7,30,504	8,62,345	8,27,653	8,08,708	7,66,177
3. Gross Fixed Capital Formation (GFCF)	20,06,738	20,82,407	21,31,192	22,33,169	21,67,215	22,66,333	22,63,287	23,69,798	23,08,813	24,14,908	24,06,171	25,17,901	24,21,123	26,18,768	26,04,635	27,90,273
4. Changes in Stocks (CIS)	38,841	29,981	42,150	62,399	82,919	90,330	97,354	1,05,409	98,093	88,950	96,258	99,272	1,03,690	98,694	1,10,392	1,09,544
5. Valuables	1,01,423	1,19,250	80,572	59,423	73,248	82,572	87,448	83,779	53,691	1,23,356	1,00,112	56,223	38,176	88,322	97,291	79,421
6. Exports	15,52,103	15,65,201	15,55,596	16,05,822	15,12,530	15,33,635	15,68,848	17,08,229	16,23,178	15,81,337	17,32,985	18,00,496	17,29,935	17,34,504	18,34,194	18,66,284
7. Imports	16,43,253	17,45,479	17,45,026	18,28,618	17,13,937	17,78,989	17,46,150	16,51,415	18,55,814	18,60,647	17,97,075	17,42,658	19,86,226	19,72,120	19,27,126	17,76,403
8. Discrepancies	-95,187	-91,358	75,256	1,11,287	24,470	57,512	1,31,314	-1,07,878	1,28,778	85,094	96,989	36,788	1,46,792	1,26,449	1,43,483	-26,815
GDP	61,59,720	60,61,357	68,19,597	70,76,953	65,65,079	65,24,195	73,03,045	76,08,448	70,54,579	69,53,870	78,40,573	81,39,598	75,35,572	75,34,423	84,64,935	87,77,104

* Values are (in ₹ Crore)

Statement 6: Growth Rates (%) for Quarterly GDP Estimates along with Expenditure Components at Constant Prices

Sector	Percentage Change Over Previous Year											
	2023-24				2024-25				2025-26			
	Q1	Q2	Q3	Q4	Q1	Q2	Q3	Q4	Q1	Q2	Q3	Q4
1. Primary Sector	4.0	2.3	1.4	3.0	3.6	4.6	6.4	4.6	4.4	3.1	1.9	3.8
1.1 Agriculture, Livestock, Forestry & Fishing	4.5	2.3	1.4	2.7	2.6	4.1	5.8	3.8	4.4	2.7	1.7	3.6
1.2. Mining & Quarrying	-0.3	2.7	1.5	5.3	11.9	8.3	13.1	12.9	4.5	6.1	4.7	5.4
2. Secondary Sector	9.0	17.2	12.7	7.8	9.1	4.8	8.4	9.8	7.3	10.6	9.8	7.4
2.1. Manufacturing	9.3	20.4	15.2	7.0	9.4	4.9	10.8	11.8	10.4	12.7	12.8	7.3
2.2. Electricity, Gas, Water Supply & Other Utility Services	5.6	14.4	12.6	10.3	9.2	-0.2	0.6	2.1	-2.0	3.6	1.5	4.1
2.3. Construction	9.7	12.7	8.7	8.7	8.7	6.1	6.4	8.0	5.3	8.9	6.7	8.4
3. Tertiary Sector	6.8	5.1	6.5	9.6	8.5	8.1	8.2	6.8	8.0	9.2	9.9	9.9
3.1 Trade, Hotels, Transport, Communication & Services related to Broadcasting, Storage	10.6	9.7	8.8	11.3	6.9	6.6	6.7	6.3	9.7	10.5	11.2	12.5
3.2 Financial, Real Estate, Ownership of dwelling, IT & Professional Services	5.1	3.2	4.8	8.6	10.3	10.0	11.1	8.8	9.2	10.3	11.6	10.4
3.3 Public Administration, Defence & Other Services	5.9	4.2	7.3	9.7	6.9	6.0	4.4	3.2	4.0	5.4	4.9	5.8
GVA at Basic Prices	6.7	7.9	6.7	7.6	7.6	6.5	7.8	7.1	7.1	8.6	8.0	7.9
Net Taxes	5.1	5.3	10.9	6.8	6.0	7.1	2.7	5.5	4.3	6.0	7.8	7.3
GDP	6.6	7.6	7.1	7.5	7.5	6.6	7.4	7.0	6.8	8.3	8.0	7.8
Expenditure Components												
1. Private Final Consumption Expenditure (PFCE)	6.4	5.3	5.4	6.0	6.1	5.6	6.0	5.6	8.7	7.2	8.2	7.1
2. Government Final Consumption Expenditure (GFCE)	-0.1	-0.9	0.9	2.5	7.5	7.0	7.6	3.6	5.8	6.6	4.6	4.9
3. Gross Fixed Capital Formation (GFCF)	8.0	8.8	6.2	6.1	6.5	6.6	6.3	6.2	4.9	8.4	8.2	10.8
4. Changes in Stocks (CIS)	113.5	201.3	131.0	68.9	18.3	-1.5	-1.1	-5.8	5.7	11.0	14.7	10.3
5. Valuables	-27.8	-30.8	8.5	41.0	-26.7	49.4	14.5	-32.9	-28.9	-28.4	-2.8	41.3
6. Exports	-2.5	-2.0	0.9	6.4	7.3	3.1	10.5	5.4	6.6	9.7	5.8	3.7
7. Imports	4.3	1.9	0.1	-9.7	8.3	4.6	2.9	5.5	7.0	6.0	7.2	1.9
8. Discrepancies	0.4	0.9	1.8	-1.4	1.8	1.2	1.2	0.5	1.9	1.7	1.7	-0.3
GDP	6.6	7.6	7.1	7.5	7.5	6.6	7.4	7.0	6.8	8.3	8.0	7.8

Statement 7: Quarterly GDP Estimates along with Expenditure Components at Current Prices

Sector	2022-23				2023-24				2024-25				2025-26			
	Q1	Q2	Q3	Q4	Q1	Q2	Q3	Q4	Q1	Q2	Q3	Q4	Q1	Q2	Q3	Q4
1. Primary Sector	12,00,272	10,13,276	15,79,300	14,69,363	12,92,695	11,08,422	16,79,270	15,75,199	14,01,698	11,79,854	18,63,096	17,17,595	14,57,348	11,81,191	18,46,287	17,78,899
1.1 Agriculture, Livestock, Forestry & Fishing	10,75,034	9,02,979	14,49,884	13,28,296	11,63,407	9,87,396	15,43,909	14,22,843	12,56,967	10,55,131	17,20,422	15,57,163	13,16,916	10,54,316	16,93,756	16,00,311
1.2. Mining & Quarrying	1,25,238	1,10,297	1,29,415	1,41,067	1,29,288	1,21,026	1,35,360	1,52,356	1,44,732	1,24,723	1,42,674	1,60,431	1,40,432	1,26,875	1,52,531	1,78,588
2. Secondary Sector	13,95,086	14,80,312	15,33,427	17,72,322	15,29,674	17,26,086	17,16,802	18,95,538	16,63,465	18,11,920	18,64,273	20,94,401	17,92,158	20,12,534	20,47,645	22,86,074
2.1. Manufacturing	7,49,660	8,36,564	8,46,826	10,49,141	8,10,786	9,88,887	9,56,949	11,01,960	8,71,419	10,27,319	10,51,790	12,28,704	9,59,166	11,61,995	11,91,200	13,50,080
2.2. Electricity, Gas, Water Supply & Other Utility Services	1,35,949	1,41,752	1,51,278	1,60,878	1,71,146	1,80,000	1,85,020	1,96,034	2,00,701	1,93,800	1,98,396	2,12,722	2,03,677	2,03,742	1,98,815	2,14,660
2.3. Construction	5,09,478	5,01,997	5,35,322	5,62,303	5,47,742	5,57,198	5,74,833	5,97,544	5,91,345	5,90,801	6,14,087	6,52,975	6,29,315	6,46,797	6,57,629	7,21,334
3. Tertiary Sector	28,94,347	30,03,651	31,65,817	32,56,588	32,51,594	33,18,268	35,18,140	37,04,416	36,21,971	36,72,344	39,07,396	40,56,455	40,17,909	40,94,205	43,91,551	45,81,038
3.1 Trade, Hotels, Transport, Communication & Services related to Broadcasting, Storage	7,73,795	7,79,963	8,47,186	8,63,443	8,74,629	8,88,008	9,59,535	9,92,399	9,47,210	9,52,473	10,27,016	10,71,296	10,53,941	10,60,592	11,57,370	12,20,109
3.2 Financial, Real Estate, IT, Professional Services & Ownership of Dwelling	13,87,114	14,95,051	15,27,888	16,08,534	15,60,037	16,30,059	16,69,272	18,14,041	17,68,217	18,43,251	19,15,020	20,22,636	19,83,568	20,72,991	21,68,226	22,87,256
3.3 Public Administration, Defence & Other Services	7,33,438	7,28,637	7,90,743	7,84,611	8,16,928	8,00,201	8,89,333	8,97,976	9,06,544	8,76,620	9,65,360	9,62,522	9,80,400	9,60,622	10,65,956	10,73,673
GVA at Basic Prices	54,89,705	54,97,239	62,78,544	64,98,273	60,73,963	61,52,775	69,14,211	71,75,153	66,87,134	66,64,118	76,34,765	78,68,451	72,67,416	72,87,930	82,85,484	86,46,011
Net Taxes	5,93,285	5,86,909	5,70,098	6,03,574	6,30,447	6,25,455	6,66,164	7,45,741	7,21,672	7,13,821	7,11,126	8,06,223	7,76,644	7,22,610	8,30,116	8,19,429
GDP	60,82,991	60,84,148	68,48,641	71,01,847	67,04,410	67,78,231	75,80,375	79,20,894	74,08,806	73,77,938	83,45,890	86,74,674	80,44,060	80,10,539	91,15,599	94,65,440
Expenditure Components																
1. Private Final Consumption Expenditure (PFCE)	34,05,615	33,64,740	39,70,636	41,81,837	37,54,429	36,97,456	43,34,080	45,90,860	41,17,901	40,31,304	48,01,174	50,20,229	45,40,582	44,03,099	52,11,295	54,95,925
2. Government Final Consumption Expenditure (GFCE)	7,33,098	7,36,921	7,07,266	7,13,624	7,79,402	7,73,805	7,54,745	7,65,936	8,93,437	8,61,227	8,50,055	7,90,618	9,42,078	9,26,256	9,26,392	8,96,295
3. Gross Fixed Capital Formation (GFCF)	20,00,108	20,77,284	21,27,235	22,48,879	21,92,739	23,11,099	23,15,634	24,26,280	23,89,986	25,15,841	25,18,779	26,40,322	25,53,351	27,65,104	27,56,229	29,88,960
4. Changes in Stocks (CIS)	33,174	27,737	47,098	65,361	79,648	87,494	1,02,888	1,08,793	96,413	88,531	97,705	99,651	97,898	97,300	1,08,504	1,12,672
5. Valuables	1,00,868	1,16,135	79,916	63,749	83,303	92,787	1,00,273	99,869	72,496	1,69,048	1,46,614	89,123	68,094	1,69,000	2,21,069	2,36,081
6. Exports	15,35,179	15,30,750	15,53,872	16,58,921	15,24,839	15,83,846	16,18,879	17,51,732	17,00,195	16,25,497	18,01,569	18,90,698	17,97,281	18,38,998	19,86,477	20,49,981
7. Imports	17,07,551	18,04,977	17,49,437	17,00,411	16,43,048	17,35,692	17,92,051	17,76,117	18,07,234	19,32,157	19,69,621	18,77,893	19,15,173	21,05,264	22,33,354	21,86,744
8. Discrepancies	-17,501	35,558	1,12,056	-1,30,114	-66,902	-32,564	1,45,926	-46,458	-54,386	18,648	99,615	21,925	-40,052	-83,954	1,38,988	-1,27,730
GDP	60,82,991	60,84,148	68,48,641	71,01,847	67,04,410	67,78,231	75,80,375	79,20,894	74,08,806	73,77,938	83,45,890	86,74,674	80,44,060	80,10,539	91,15,599	94,65,440

* Values are (in ₹ Crore)

Statement 8: Growth Rates (%) for Quarterly GDP Estimates along with Expenditure Components at Current Prices

Sector	Percentage Change Over Previous Year											
	2023-24				2024-25				2025-26			
	Q1	Q2	Q3	Q4	Q1	Q2	Q3	Q4	Q1	Q2	Q3	Q4
1. Primary Sector	7.7	9.4	6.3	7.2	8.4	6.4	10.9	9.0	4.0	0.1	-0.9	3.6
1.1 Agriculture, Livestock, Forestry & Fishing	8.2	9.3	6.5	7.1	8.0	6.9	11.4	9.4	4.8	-0.1	-1.5	2.8
1.2. Mining & Quarrying	3.2	9.7	4.6	8.0	11.9	3.1	5.4	5.3	-3.0	1.7	6.9	11.3
2. Secondary Sector	9.6	16.6	12.0	7.0	8.7	5.0	8.6	10.5	7.7	11.1	9.8	9.2
2.1. Manufacturing	8.2	18.2	13.0	5.0	7.5	3.9	9.9	11.5	10.1	13.1	13.3	9.9
2.2. Electricity, Gas, Water Supply & Other Utility Services	25.9	27.0	22.3	21.9	17.3	7.7	7.2	8.5	1.5	5.1	0.2	0.9
2.3. Construction	7.5	11.0	7.4	6.3	8.0	6.0	6.8	9.3	6.4	9.5	7.1	10.5
3. Tertiary Sector	12.3	10.5	11.1	13.8	11.4	10.7	11.1	9.5	10.9	11.5	12.4	12.9
3.1 Trade, Hotels, Transport, Communication & Services related to Broadcasting, Storage	13.0	13.9	13.3	14.9	8.3	7.3	7.0	8.0	11.3	11.4	12.7	13.9
3.2 Financial, Real Estate, IT, Professional Services & Ownership of Dwelling	12.5	9.0	9.3	12.8	13.3	13.1	14.7	11.5	12.2	12.5	13.2	13.1
3.3 Public Administration, Defence & Other Services	11.4	9.8	12.5	14.4	11.0	9.5	8.5	7.2	8.1	9.6	10.4	11.5
GVA at Basic Prices	10.6	11.9	10.1	10.4	10.1	8.3	10.4	9.7	8.7	9.4	8.5	9.9
Net Taxes	6.3	6.6	16.9	23.6	14.5	14.1	6.7	8.1	7.6	1.2	16.7	1.6
GDP	10.2	11.4	10.7	11.5	10.5	8.8	10.1	9.5	8.6	8.6	9.2	9.1
Expenditure Components												
1. Private Final Consumption Expenditure (PFCE)	10.2	9.9	9.2	9.8	9.7	9.0	10.8	9.4	10.3	9.2	8.5	9.5
2. Government Final Consumption Expenditure (GFCE)	6.3	5.0	6.7	7.3	14.6	11.3	12.6	3.2	5.4	7.6	9.0	13.4
3. Gross Fixed Capital Formation (GFCF)	9.6	11.3	8.9	7.9	9.0	8.9	8.8	8.8	6.8	9.9	9.4	13.2
4. Changes in Stocks (CIS)	140.1	215.4	118.5	66.4	21.0	1.2	-5.0	-8.4	1.5	9.9	11.1	13.1
5. Valuables	-17.4	-20.1	25.5	56.7	-13.0	82.2	46.2	-10.8	-6.1	-0.03	50.8	164.9
6. Exports	-0.7	3.5	4.2	5.6	11.5	2.6	11.3	7.9	5.7	13.1	10.3	8.4
7. Imports	-3.78	-3.84	2.4	4.5	10.0	11.3	9.9	5.7	6.0	9.0	13.4	16.4
8. Discrepancies	-1.0	-0.5	1.9	-0.6	-0.7	0.3	1.2	0.3	-0.5	-1.0	1.5	-1.3
GDP	10.2	11.4	10.7	11.5	10.5	8.8	10.1	9.5	8.6	8.6	9.2	9.1
Expenditure Components												
Share in GDP (%)												
1. Private Final Consumption Expenditure (PFCE)	56.0	54.5	57.2	58.0	55.6	54.6	57.5	57.9	56.4	55.0	57.2	58.1
2. Government Final Consumption Expenditure (GFCE)	11.6	11.4	10.0	9.7	12.1	11.7	10.2	9.1	11.7	11.6	10.2	9.5
3. Gross Fixed Capital Formation (GFCF)	32.7	34.1	30.5	30.6	32.3	34.1	30.2	30.4	31.7	34.5	30.2	31.6
4. Changes in Stocks (CIS)	1.2	1.3	1.4	1.4	1.3	1.2	1.2	1.1	1.2	1.2	1.2	1.2
5. Valuables	1.2	1.4	1.3	1.3	1.0	2.3	1.8	1.0	0.8	2.1	2.4	2.5
6. Exports	22.7	23.4	21.4	22.1	22.9	22.0	21.6	21.8	22.3	23.0	21.8	21.7
7. Imports	24.5	25.6	23.6	22.4	24.4	26.2	23.6	21.6	23.8	26.3	24.5	23.1
8. Discrepancies	-1.0	-0.5	1.9	-0.6	-0.7	0.3	1.2	0.3	-0.5	-1.0	1.5	-1.3
GDP	100.0	100.0	100.0	100.0	100.0	100.0	100.0	100.0	100.0	100.0	100.0	100.0

In case of Discrepancy % share is GDP is given instead of percentage change over previous year.

Annexure**Year-on-Year Growth Rate (%) in Indicators**

Indicators	FY 2025-26	
	Q4	Annual
Total Food Grain Production	9.6	5.3
Cereals	10.5	5.2
Rice	10.7	2.6
Wheat	7.2	2.3
Cement Production Index	8.2	8.7
Finished Steel Consumption	10.4	8.0
Natural Gas Consumption	-2.8	-3.0
Sales of Commercial Vehicles	19.0	12.6
Sales of Three Wheelers	26.7	12.8
Cargo Handled at Major Ports	4.3	7.0
Cargo Handled at Minor Ports	-1.0	1.4
Air Passenger Traffic and Cargo handled (Scheduled Domestic Service)	3.7	3.7
Air Passenger Traffic and Cargo handled (Scheduled International Service)	11.1	9.7
Railway Net Tonne Km	1.9	1.4
Railway Passenger Km.	4.5	5.3
Central Goods and Services Tax (CGST)	9.0	6.4
Custom Duty	9.5	13.5
Union Excise	21.7	13.9
Fertilizer Subsidy (Urea + Nutrient based Fertilizer)	44.2	21.7
Household Vehicle Registration	28.7	17.4
Passenger Transport Vehicle Registration	19.8	14.7
Goods Transport Vehicles Registration	27.0	18.3
Export of Goods and Services	8.3	9.3
Import of Goods and Services	16.2	11.1
Import of Transport Goods	-1.9	6.0
Import of Machinery Equipment	24.9	19.3
WPI Food Grains	-3.1	-2.5
WPI Crude Petroleum and Natural Gas	8.3	-5.1
WPI Manufactured Products	3.0	2.3
